



INDIANA DEPARTMENT OF TRANSPORTATION

100 North Senate Avenue
Room N925 CM
Indianapolis, Indiana 46204

PHONE: (317) 232-5502
FAX: (317) 232-5551

Eric Holcomb, Governor
Joe McGuinness, Commissioner

AGENDA

May 18, 2017 Standards Committee Meeting

MEMORANDUM

May 03, 2017

TO: Standards Committee

FROM: Scott Trammell, Secretary

RE: Agenda for the May 18, 2017 Standards Committee Meeting

A Standards Committee meeting is scheduled for 09:00 a.m. on May 18, 2017 in the N955 Bay Window Conference Room. Please enter meeting through the double doors directly in front of the conference room.

The following items are listed for consideration:

A. GENERAL BUSINESS ITEMS

OLD BUSINESS

(No items on this agenda)

NEW BUSINESS

1. *Approval of the Minutes from the April 20, 2017 meeting*

B. CONCEPTUAL PROPOSAL ITEMS

OLD BUSINESS

(No items on this agenda)

NEW BUSINESS

(No items on this agenda)

C. STANDARD SPECIFICATIONS, SPECIAL PROVISIONS AND STANDARD DRAWINGS
PROPOSED ITEMS

OLD BUSINESS

(No items on this agenda)

NEW BUSINESS

<u>Item No. 1</u>	<u>(2016 SS)</u>	<u>Ms. Phillips</u>	<u>pg 4</u>
601-TBGC-01		THRIE-BEAM GUARDRAIL COMPONENTS	
601-TBGC-02		THRIE-BEAM GUARDRAIL COMPONENTS	
601-MGSA-01		MIDWEST GUARDRAIL SYSTEM ASSEMBLY	
601-MGSA-02		MIDWEST GUARDRAIL SYSTEM ASSEMBLY	
601-MGSA-03		MIDWEST GUARDRAIL SYSTEM ASSEMBLY	
601-MGSA-04		MIDWEST GUARDRAIL SYSTEM ASSEMBLY	
601-MGSA-05		MIDWEST GUARDRAIL SYSTEM ASSEMBLY	
601-MGSA-06		MIDWEST GUARDRAIL SYSTEM ASSEMBLY, OMITTED POST	
601-MGSA-07		MIDWEST GUARDRAIL SYSTEM ASSEMBLY, OMITTED POST	
601-MGSA-08		MIDWEST GUARDRAIL SYSTEM ASSEMBLY, LONG-SPAN	
601-MGSA-09		MIDWEST GUARDRAIL SYSTEM ASSEMBLY, LONG-SPAN	
601-MGSA-10		MIDWEST GUARDRAIL SYSTEM ASSEMBLY, STRUCTURE TOP-MOUNTED POST	
601-MGSA-11		MIDWEST GUARDRAIL SYSTEM ASSEMBLY, GUARDRAIL TRANSITION WITH CURB	
601-MGSA-12		MIDWEST GUARDRAIL SYSTEM ASSEMBLY, GUARDRAIL TRANSITION WITHOUT CURB	
601-MGSA-13		MIDWEST GUARDRAIL SYSTEM ASSEMBLY, GUARDRAIL TRANSITION	
601-MGSA-14		MIDWEST GUARDRAIL SYSTEM ASSEMBLY, GUARDRAIL TRANSITION	
601-MGSA-15		MIDWEST GUARDRAIL SYSTEM ASSEMBLY, GUARDRAIL TRANSITION	
601-MGSA-16		MIDWEST GUARDRAIL SYSTEM ASSEMBLY, GUARDRAIL HEIGHT TRANSITION	
601-MGSA-17		MIDWEST GUARDRAIL SYSTEM ASSEMBLY, CABLE TERMINAL ANCHOR SYSTEM	
601-MGSA-18		MIDWEST GUARDRAIL SYSTEM ASSEMBLY, CABLE TERMINAL ANCHOR SYSTEM	
601-MGSA-19		MIDWEST GUARDRAIL SYSTEM ASSEMBLY, CABLE TERMINAL ANCHOR SYSTEM	
601-MGSA-20		MIDWEST GUARDRAIL SYSTEM ASSEMBLY, CABLE TERMINAL ANCHOR SYSTEM	
601-MGSA-21		MIDWEST GUARDRAIL SYSTEM ASSEMBLY, CABLE TERMINAL ANCHOR SYSTEM	
601-MGSA-22		MIDWEST GUARDRAIL SYSTEM ASSEMBLY, CABLE TERMINAL ANCHOR SYSTEM	
601-MGSA-23		MIDWEST GUARDRAIL SYSTEM ASSEMBLY, WORKING WIDTH	

(CONTINUED)

<u>Item No. 2</u>	<u>(2016 SS)</u>	<u>Mr. Boruff</u>	<u>pg 35</u>
Recurring Special Provision:			
805-T-078		ELECTRICAL INSULATION SEALANT	

<u>Item No. 3</u>	<u>(2016 SS)</u>	<u>Mr. Pankow</u>	<u>pg 39</u>
103.06		Wage and Labor Requirements	

cc: Committee Members
FHWA
ICI

STANDARD SPECIFICATIONS, SPECIAL PROVISIONS AND STANDARD DRAWINGS
REVISION TO STANDARD SPECIFICATIONS AND STANDARD DRAWINGS

PROPOSAL TO STANDARDS COMMITTEE

PROBLEM(S) ENCOUNTERED: The 2016 *Manual for Assessing Safety Hardware* (2016 MASH) is the current standard for crash testing safety hardware (guardrail, end treatments, bridge railing, transitions, etc.). MASH replaces the previous standard NCHRP Report 350. The American Association of State Highway and Transportation Officials (AASHTO) and the Federal Highway Administration (FHWA) entered into a Joint Implementation Agreement for the new installation and full replacement of safety hardware. The agreement sets dates after which only MASH-compliant hardware can be installed. The deadline for guardrail on the NHS is letting dates on or after December 31, 2017.

The current w-beam guardrail standard (known as strong-post w-beam) set at 27 ¾" railing height met the MASH crash-testing requirements for the steel post configuration. However, w-beam guardrail has been historically performing at or very near 100 percent of structural design capacity.

PROPOSED SOLUTION: Replace the current strong post w-beam guardrail with non-proprietary Midwest Guardrail System (MGS) w-beam guardrail.

Although visually similar, notable differences between the two systems are:

- The MGS w-beam has a top rail height of 31" vs. 27 ¾" for the strong-post w-beam.
- The MGS w-beam has a mid-span splice vs. a splice at the post for the strong post w-beam.
- The MGS w-beam uses a 6-ft post with an embedment depth of 3'-4". INDOT currently uses a 7-ft post with 4'-7 ¼" embedment), but a 6-ft post is acceptable.

The two systems use the same w-beam rail section and assembly bolts, may use either a steel or wood post, and may use either a wood or composite blockout. The MGS w-beam system will maintain the same 1'-5" typical section (front face of rail to back face of post) as current strong-post w-beam guardrail system.

Standard Specifications sections 601, 926.03, 910.11 and 911.02 are under review. Proposed changes (including pay items) will be brought for review and approval at a later date. IDM sections 49-4.0 thru 49-9.0 are under review and will be provided at a later date.

APPLICABLE STANDARD SPECIFICATIONS: 601, 926.03, 910.11, and 911.02(f)

APPLICABLE STANDARD DRAWINGS: 601-TBGC-01 and -02 (add 6'-3" thrie beam element and asymmetric element), New 601-MGSA series

APPLICABLE DESIGN MANUAL SECTION: 49-4.0, 49-5.0, 49-8.0, 49-9.0

STANDARD SPECIFICATIONS, SPECIAL PROVISIONS AND STANDARD DRAWINGS
REVISION TO STANDARD SPECIFICATIONS AND STANDARD DRAWINGS

APPLICABLE SECTION OF GIFE: Section 21.1. Currently general and may not need updates, but providing a distinction between strong post w-beam and MGS may be beneficial.

APPLICABLE RECURRING SPECIAL PROVISIONS: No

PAY ITEMS AFFECTED: Yes

APPLICABLE SUB-COMMITTEE ENDORSEMENT: Todd Shields and Elizabeth Phillips
Comments have been solicited from industry and ICI.

IMPACT ANALYSIS (attach report): Yes

Submitted By: Katherine Smutzer for Elizabeth Phillips

Title: Standards Engineer

Organization: INDOT/Standards

Phone Number: 317-233-2074

Date: April 24, 2017

IMPACT ANALYSIS REPORT CHECKLIST

Explain the business case as to why this item should be presented to the Standards Committee for approval. Answer the following questions with Yes, No or N/A.

Does this item appear in any other specification sections? No

Will approval of this item affect the Approved Materials List? No
(materials are all the same)

Will this proposal improve:

Construction costs? No

Construction time? No

Customer satisfaction? Yes

Congestion/travel time? No

Ride quality? No

Ms. Phillips
Date: 05/18/17

STANDARD SPECIFICATIONS, SPECIAL PROVISIONS AND STANDARD DRAWINGS
REVISION TO STANDARD SPECIFICATIONS AND STANDARD DRAWINGS

Will this proposal reduce operational costs or maintenance effort? No

Will this item improve safety:

For motorists? Yes

For construction workers? No

Will this proposal improve quality for:

Construction procedures/processes? No

Asset preservation? No

Design process? No

Will this change provide the contractor more flexibility? No

Will this proposal provide clarification for the Contractor and field personnel? No

Can this item improve/reduce the number of potential change orders? No

Is this proposal needed for compliance with:

Federal or State regulations? Yes

AASHTO or other design code? Yes

Is this item editorial? No

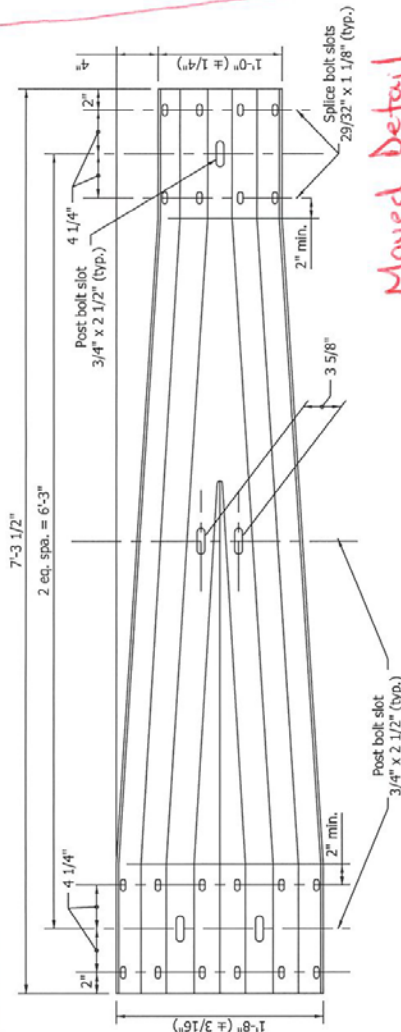
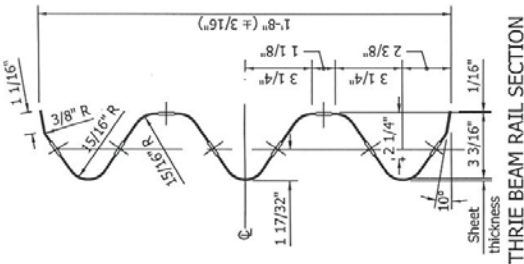
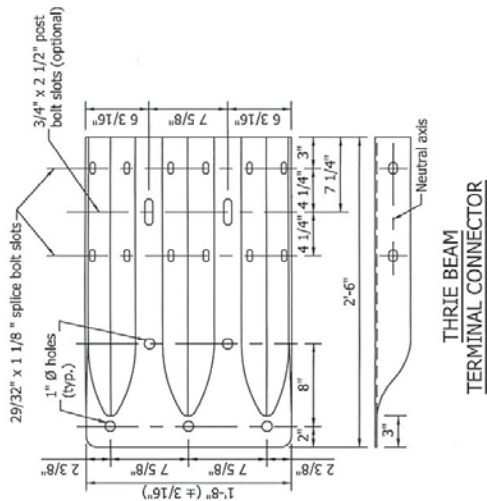
Provide any further information as to why this proposal should be placed on the Standards Committee meeting Agenda: MASH-compliant w-beam guardrail must be used for installations on the NHS for projects letting after December 31, 2017.

REVISION TO STANDARD DRAWINGS

601-TBGC-01 THRIE-BEAM GUARDRAIL COMPONENTS (WITH MARKUPS)

Note:
 1. All thrie-beam components shall be 12 gage, except as shown.

Added a
 6'-3' Thrie Beam
 Rail Section
 for Guardrail MGS
 Transition



Moved detail
 to sheet -02

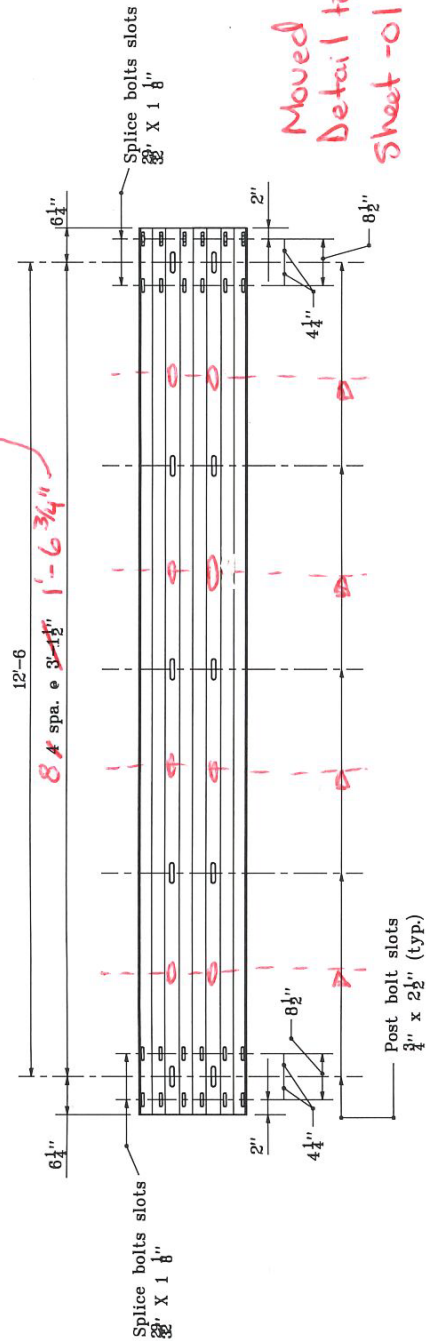
INDIANA DEPARTMENT OF TRANSPORTATION	
THRIE-BEAM GUARDRAIL COMPONENTS	
SEPTEMBER 2011	
STANDARD DRAWING NO. E 601-TBGC-01	
DESIGN STANDARDS ENGINEER	DATE
/s/ Richard L. VanCleave	09/01/11
DESIGN STANDARDS ENGINEER	DATE
/s/ Mark A. Miller	09/01/11
CHIEF HIGHWAY ENGINEER	DATE
REGISTERED ENGINEER	
NO. 9750	
STATE OF INDIANA	
PROFESSIONAL	
DESIGN STANDARDS ENGINEER	

REVISION TO STANDARD DRAWINGS

601-TBGC-02 THRIE-BEAM GUARDRAIL COMPONENTS (WITH MARKUPS)

Note:

1. (Same Notes on -01)
MGS
→ Add extra holes for Guardrail Transition



Moved
Detail to
Sheet -01

Added Symmetric W-Beam to Thrie Beam Transition Section from Sheet -01

Add New Asymmetric W-Beam to Thrie Beam Transition Section

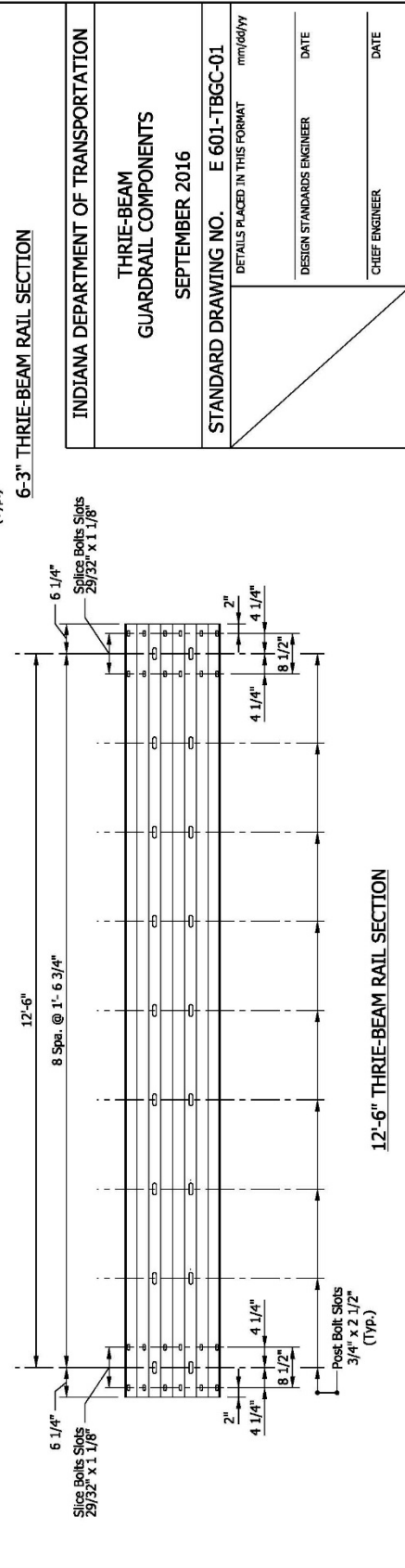
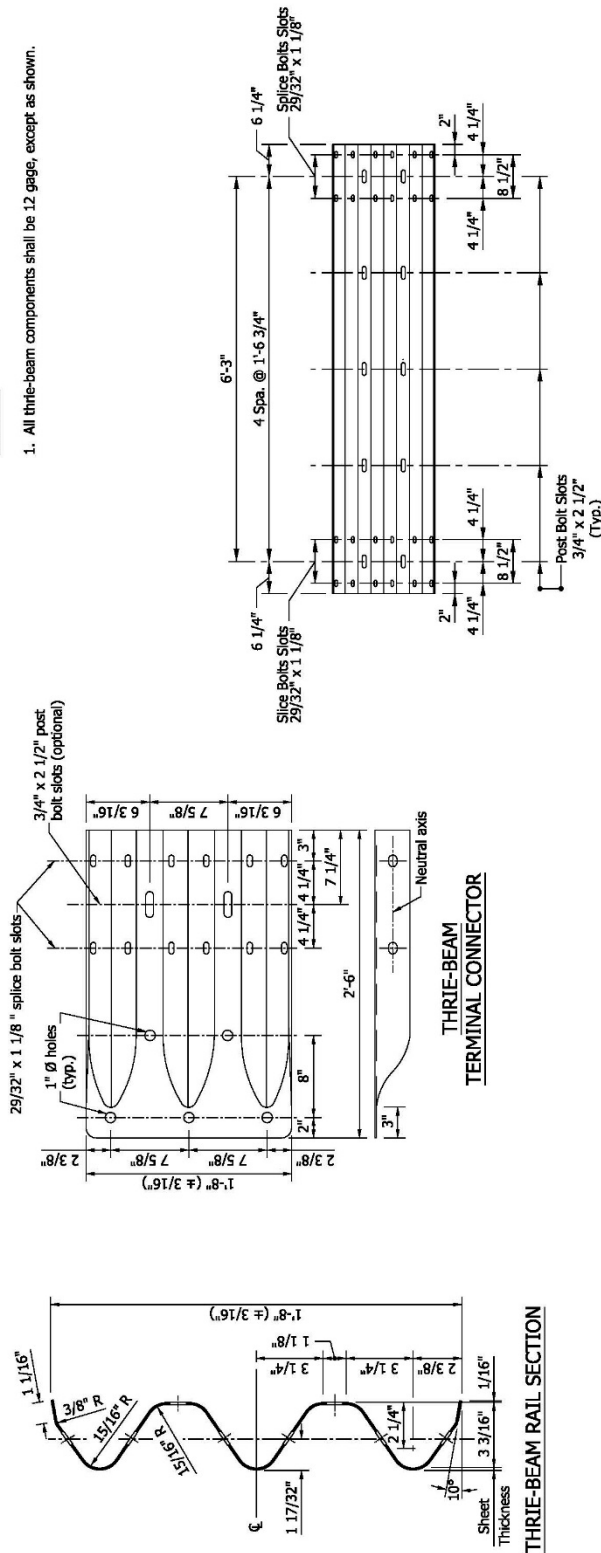
INDIANA DEPARTMENT OF TRANSPORTATION	
THRIE-BEAM GUARDRAIL COMPONENTS APRIL 1996	
STANDARD DRAWING NO. E 601-TBGC-02	
DETAILS PLACED IN THE FORMAT 11-15-99	
No. 18035 STATE OF INDIANA PROFESSIONAL ENGINEER	
/s/ Anthony L. Uremovich 11-15-99 DESIGN STANDARDS ENGINEER DATE	
/s/ Ferooz Zandi 11-15-99 CHIEF HIGHWAY ENGINEER DATE	
DESIGN STANDARDS ENGINEER ORIGINALY APPROVED 4-01-96	

REVISION TO STANDARD DRAWINGS

601-TBGC-01 THRIE-BEAM GUARDRAIL COMPONENTS (DRAFT)

NOTES:

1. All thrie-beam components shall be 12 gage, except as shown.



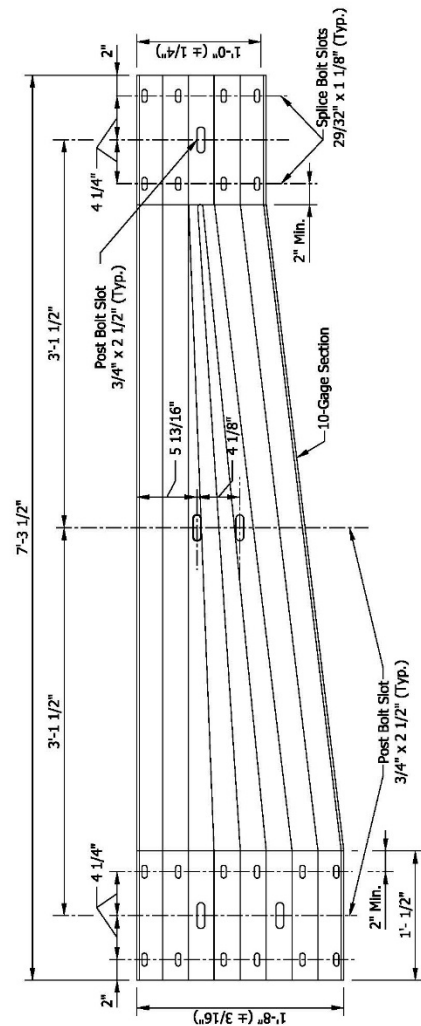
INDIANA DEPARTMENT OF TRANSPORTATION	
THRIE-BEAM GUARDRAIL COMPONENTS	
SEPTEMBER 2016	
STANDARD DRAWING NO. E 601-TBGC-01	DETAILS PLACED IN THIS FORMAT mm/dd/yy
DESIGN STANDARDS ENGINEER	DATE
CHIEF ENGINEER	DATE

REVISION TO STANDARD DRAWINGS

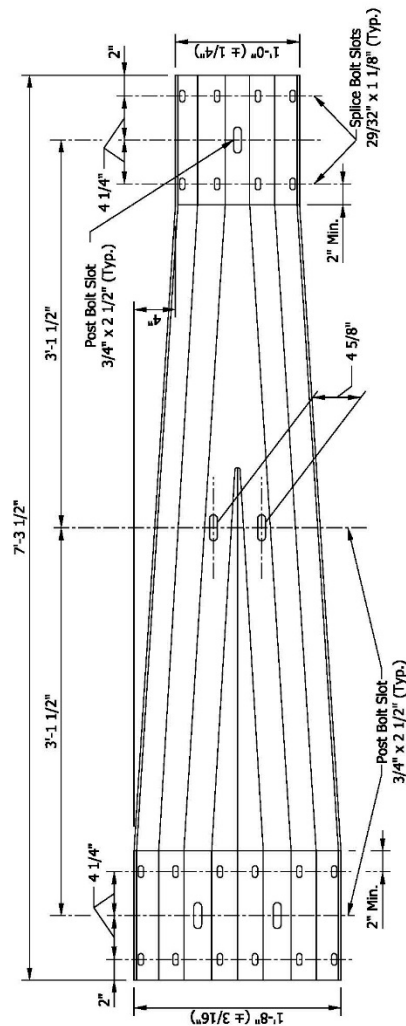
601-TBGC-02 THRIE BEAM TRANSITION SECTION (DRAFT)

NOTES:

1. All thrie-beam components shall be 12 gage, except as shown.



ASYMMETRIC MGS W-BEAM TO THRIE-BEAM TRANSITION SECTION



SYMMETRIC W-BEAM TO THRIE-BEAM TRANSITION SECTION

INDIANA DEPARTMENT OF TRANSPORTATION

THRIE BEAM
 GUARDRAIL COMPONENTS
 MONTH YEAR

STANDARD DRAWING NO. E 601-TBGC-02

DETAILS PLACED IN THIS FORMAT mm/dd/yy

DESIGN STANDARDS ENGINEER DATE

CHIEF ENGINEER DATE

[illegible]

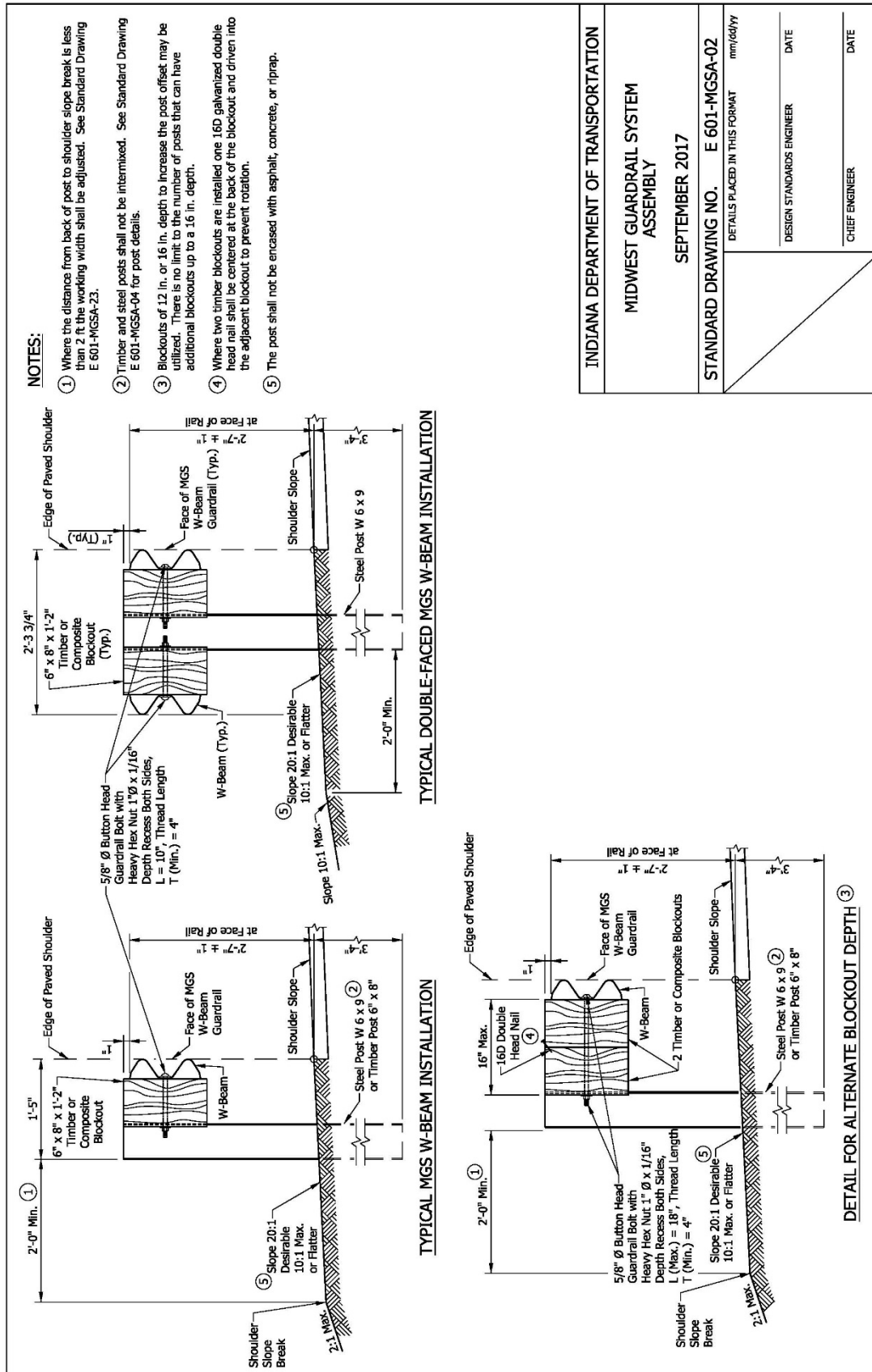
GENERAL NOTES:

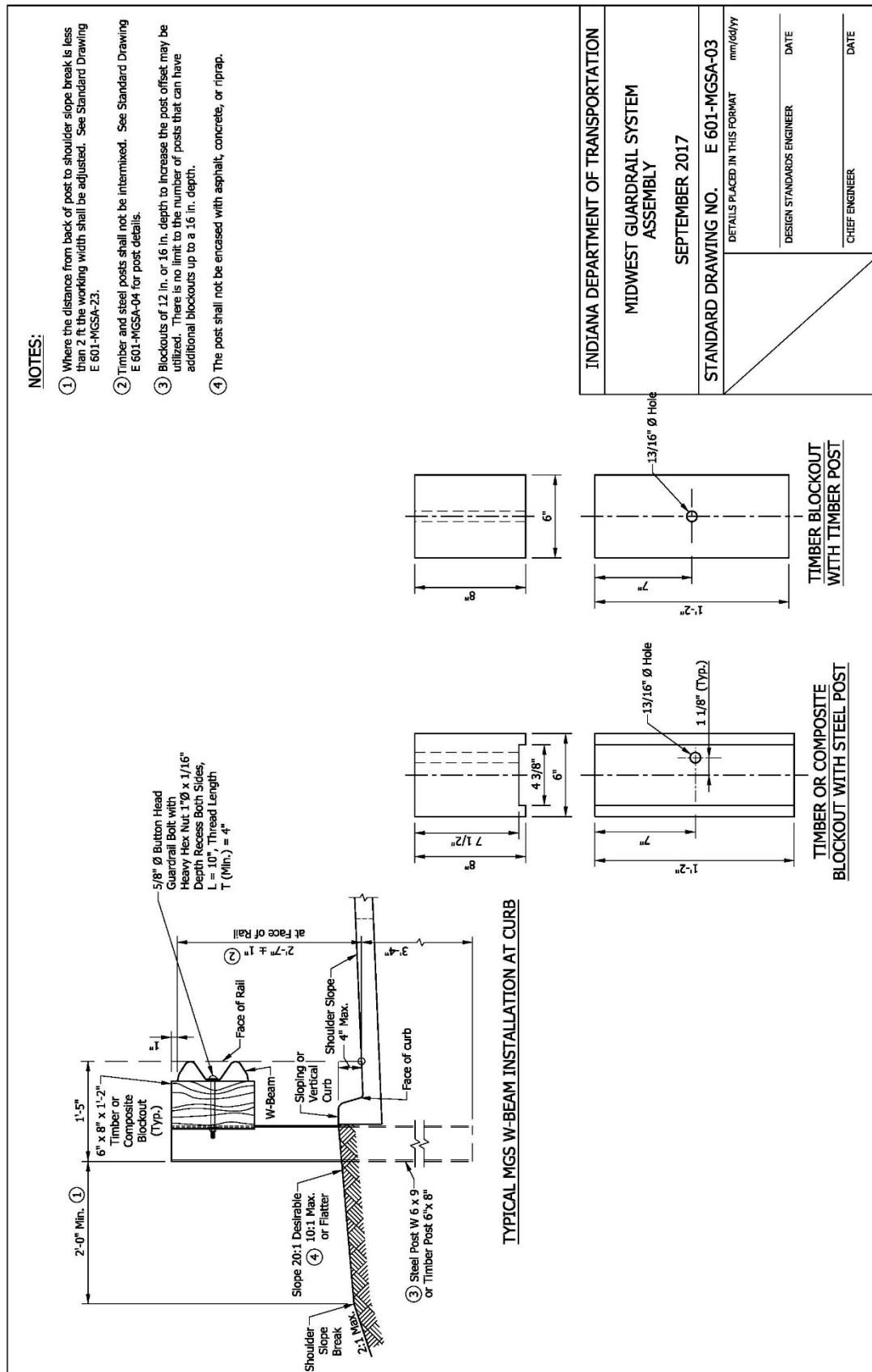
1. The Midwest Guardrail System (MGS) is a steel or timber post w-beam guardrail semi-rigid longitudinal barrier system. The standard post length for MGS w-beam guardrail shall be 6 ft, unless noted otherwise.
2. MGS w-beam guardrail, omitted post, long-span, structure top-mount, guardrail transition, and cable terminal anchor are MASH TL-3 compliant.
3. Guardrail post W 6 x 8.5 may be substituted for W 6 x 9. The two post sections may not be intermixed.

INDIANA DEPARTMENT OF TRANSPORTATION	
MIDWEST GUARDRAIL SYSTEM ASSEMBLY	
SEPTEMBER 2017	
STANDARD DRAWING NO.	E 601-MGSA-01
DETAILS PLACED IN THIS FORMAT	
mm/dd/yy	
DESIGN STANDARDS ENGINEER	DATE
CHIEF ENGINEER	DATE

REVISION TO STANDARD DRAWINGS

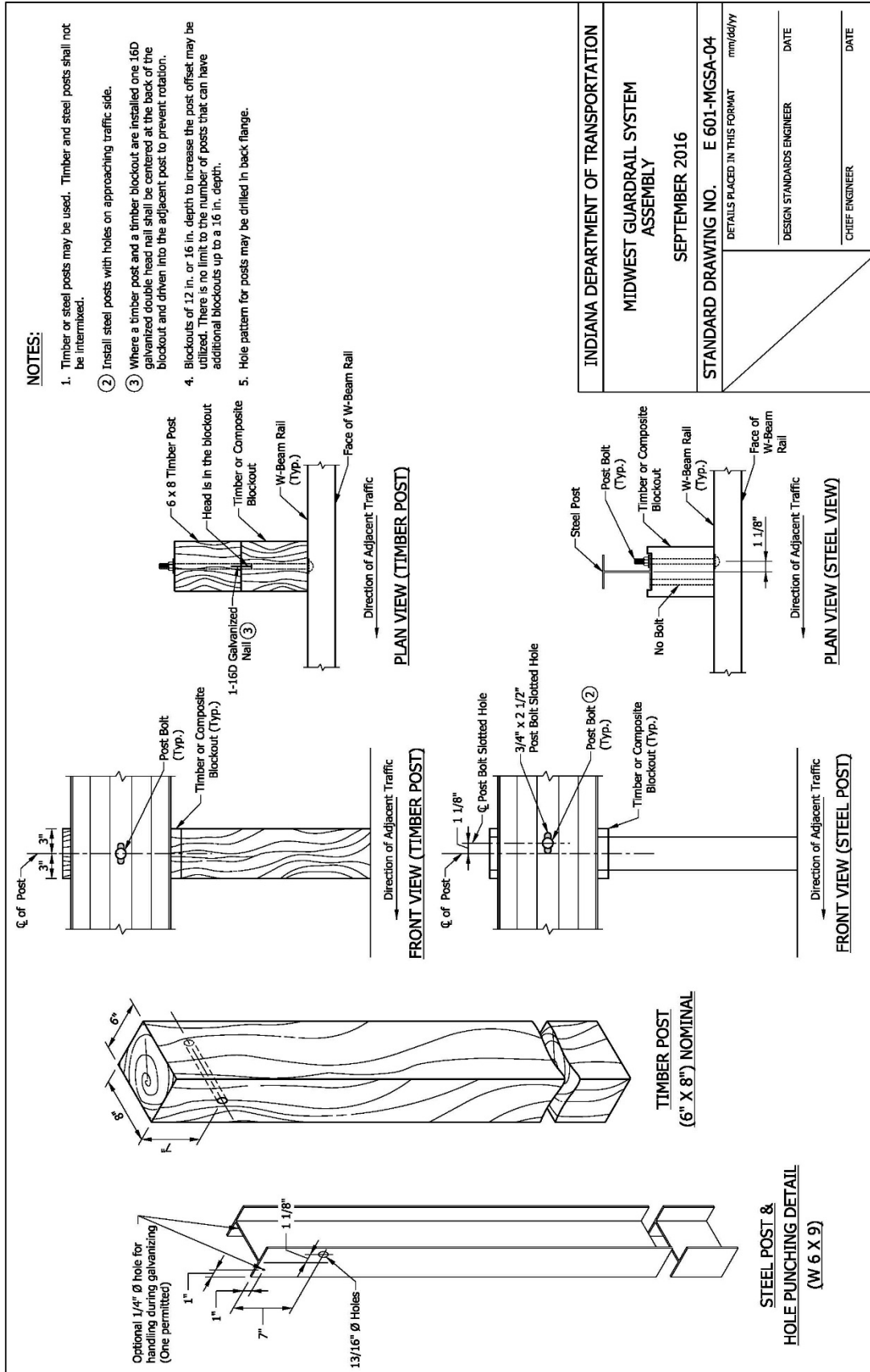
601-MGSA-02 MIDWEST GUARDRAIL SYSTEM ASSEMBLY (DRAFT)





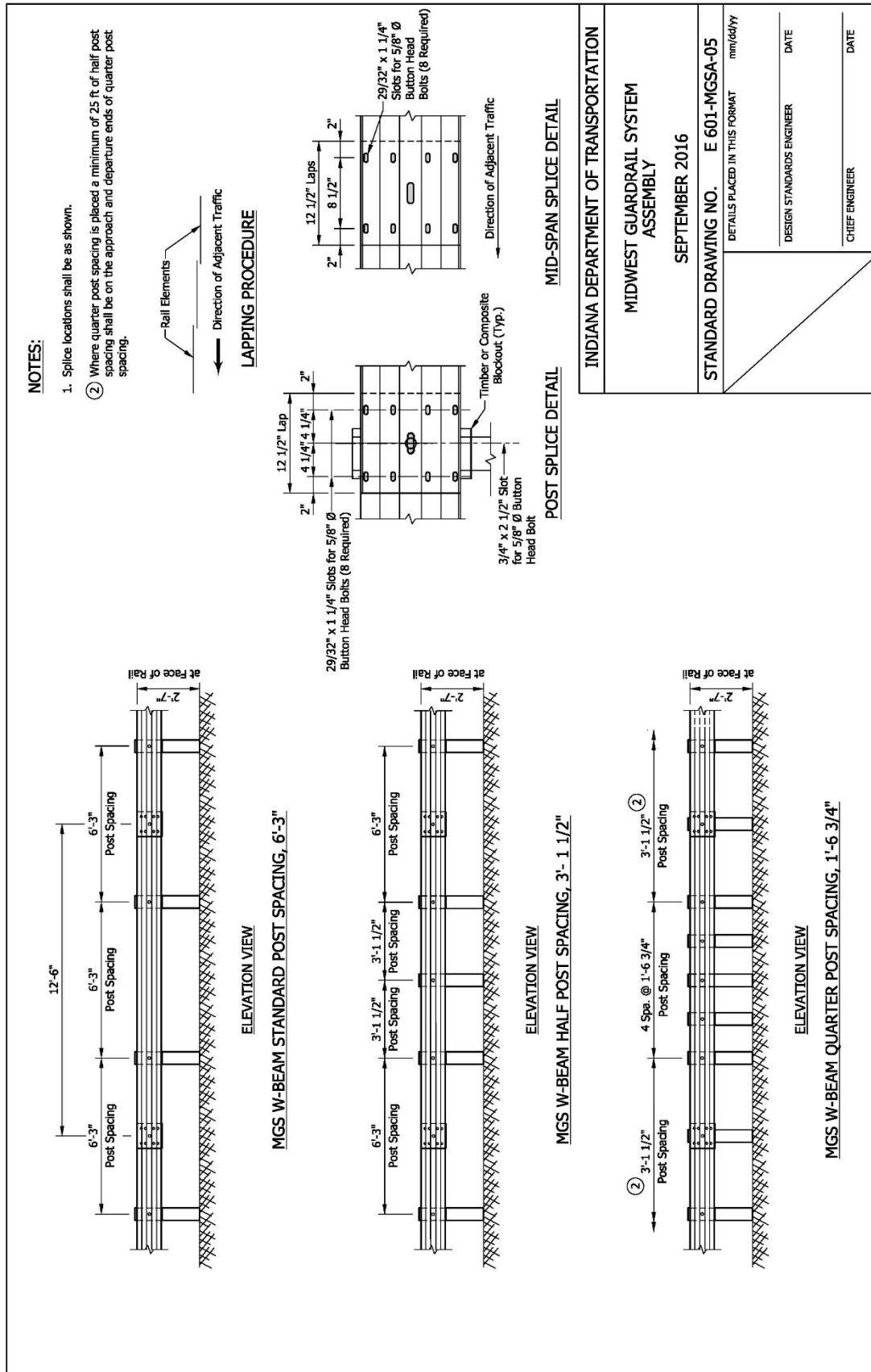
REVISION TO STANDARD DRAWINGS

601-MGSA-04 MIDWEST GUARDRAIL SYSTEM ASSEMBLY (DRAFT)



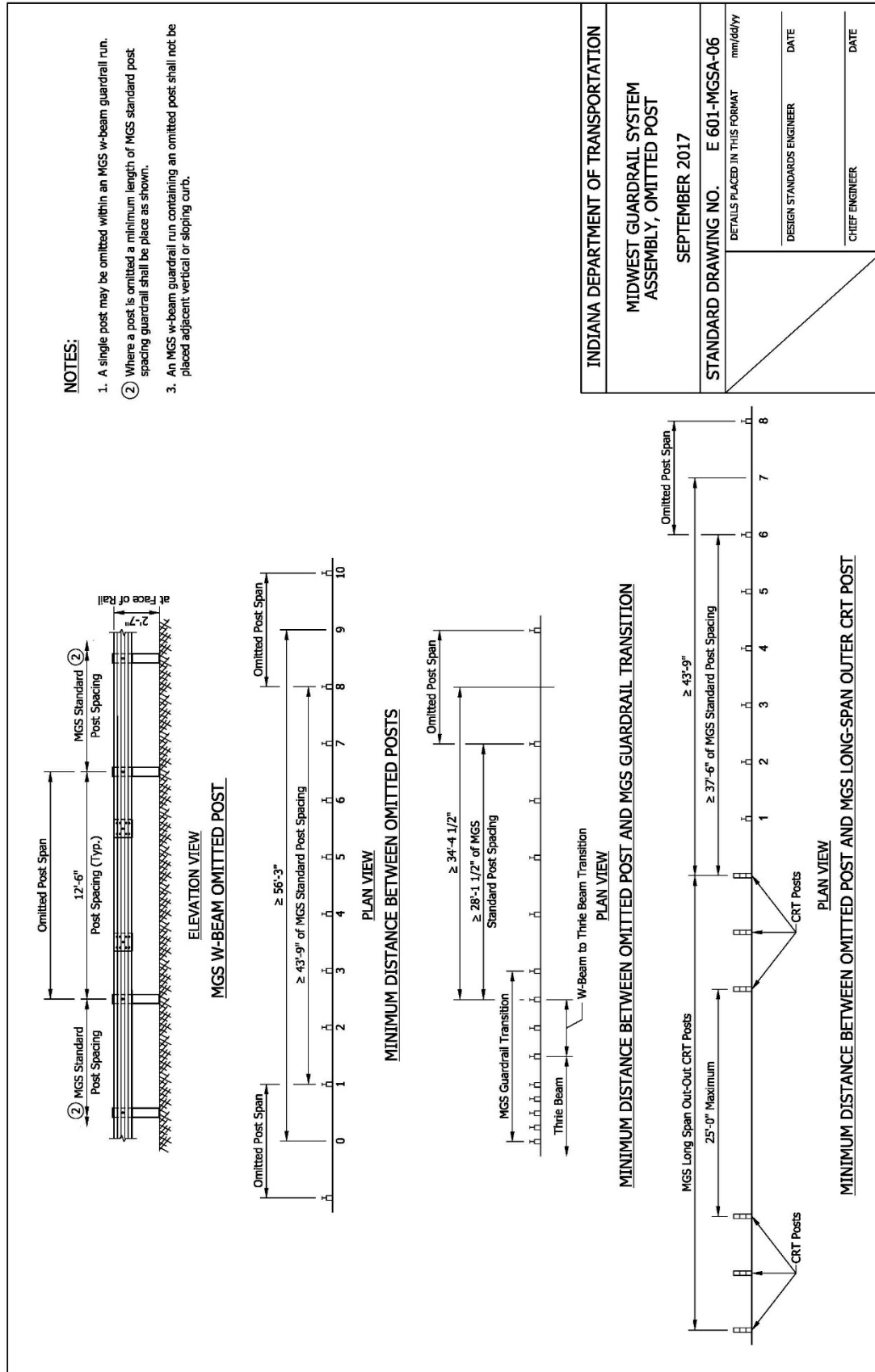
REVISION TO STANDARD DRAWINGS

601-MGSA-05 MIDWEST GUARDRAIL SYSTEM ASSEMBLY (DRAFT)



REVISION TO STANDARD DRAWINGS

601-MGSA-06 MIDWEST GUARDRAIL SYSTEM ASSEMBLY, OMITTED POST (DRAFT)

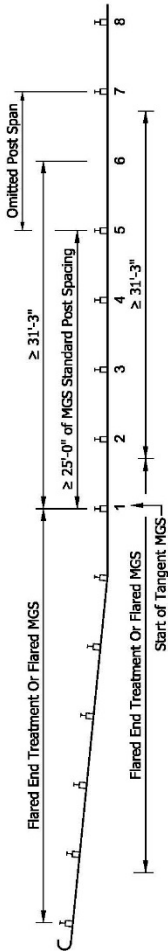


REVISION TO STANDARD DRAWINGS

601-MGSA-07 MIDWEST GUARDRAIL SYSTEM ASSEMBLY, OMITTED POST (DRAFT)

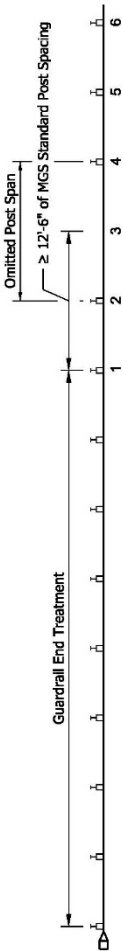
NOTES:

- 1. A single post may be omitted within an MGS w-beam guardrail run. See Standard Drawing E 601-MGSA-06
- 2. Where a post is omitted a minimum length of MGS standard post spacing guardrail shall be place as shown.
- 3. An MGS w-beam guardrail run containing an omitted post shall not be placed adjacent vertical or sloping curb.



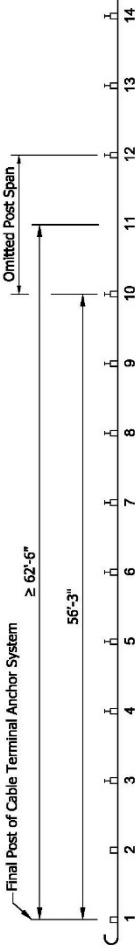
PLAN VIEW

MINIMUM DISTANCE BETWEEN OMITTED POST AND FLARED MGS W-BEAM



PLAN VIEW

MINIMUM DISTANCE BETWEEN OMITTED POST AND GUARDRAIL END TREATMENT

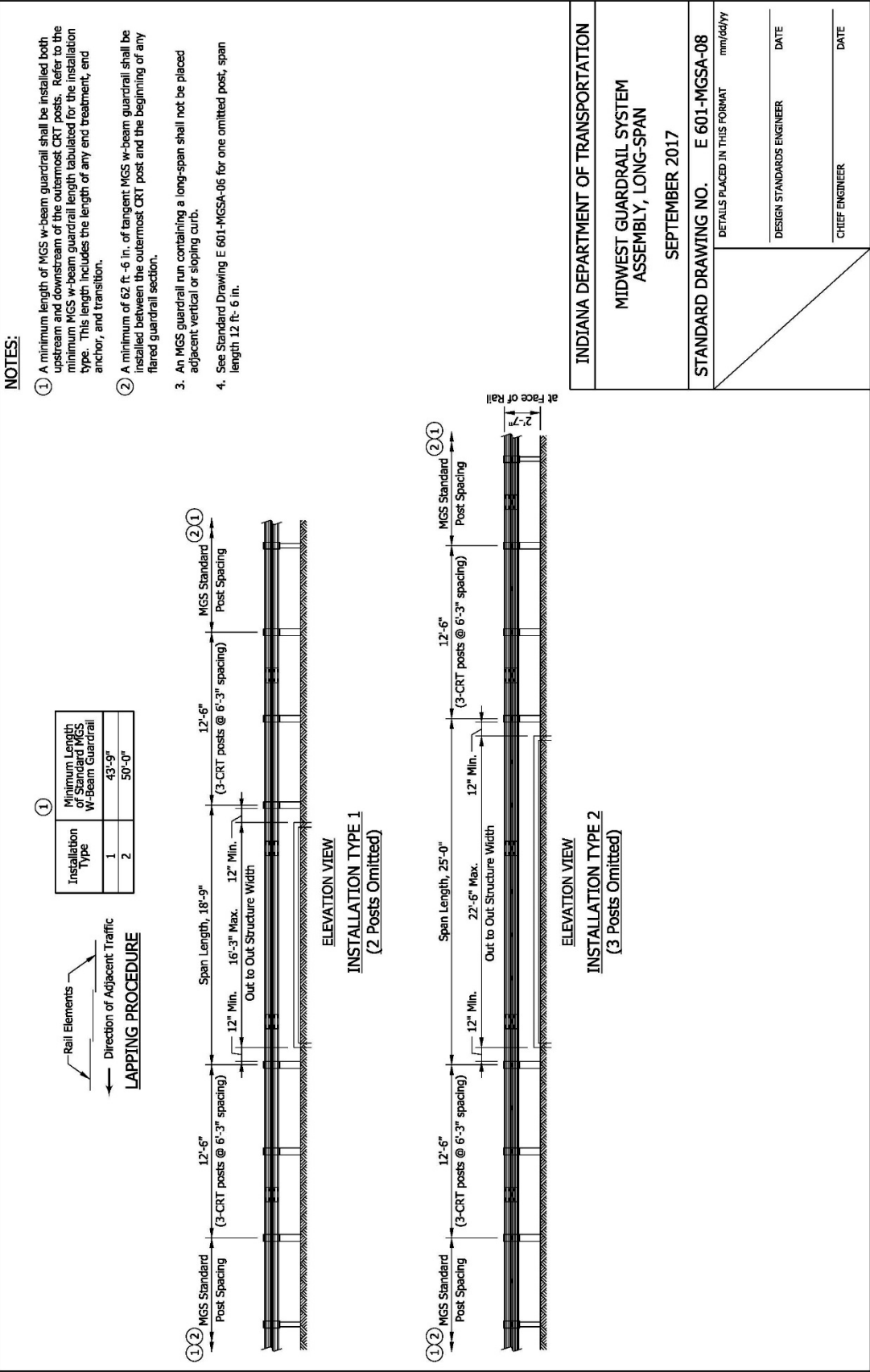


PLAN VIEW

MINIMUM DISTANCE BETWEEN OMITTED POST AND MGS CABLE TERMINAL ANCHOR SYSTEM

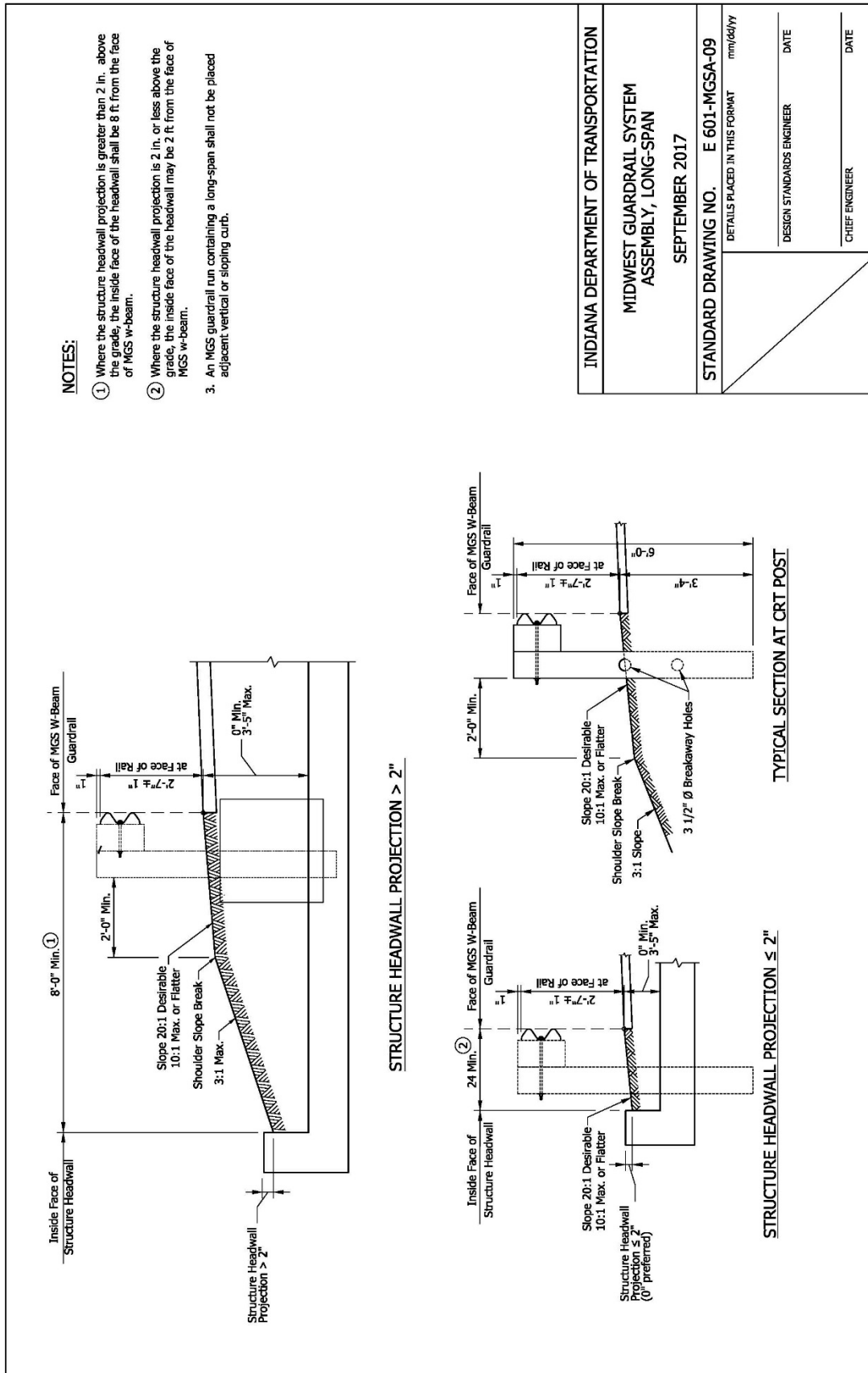
INDIANA DEPARTMENT OF TRANSPORTATION	
MIDWEST GUARDRAIL SYSTEM ASSEMBLY, OMITTED POST SEPTEMBER 2017	
STANDARD DRAWING NO. E 601-MGSA-07 DETAILS PLACED IN THIS FORMAT mm/dd/yy	DESIGN STANDARDS ENGINEER DATE
	CHIEF ENGINEER DATE

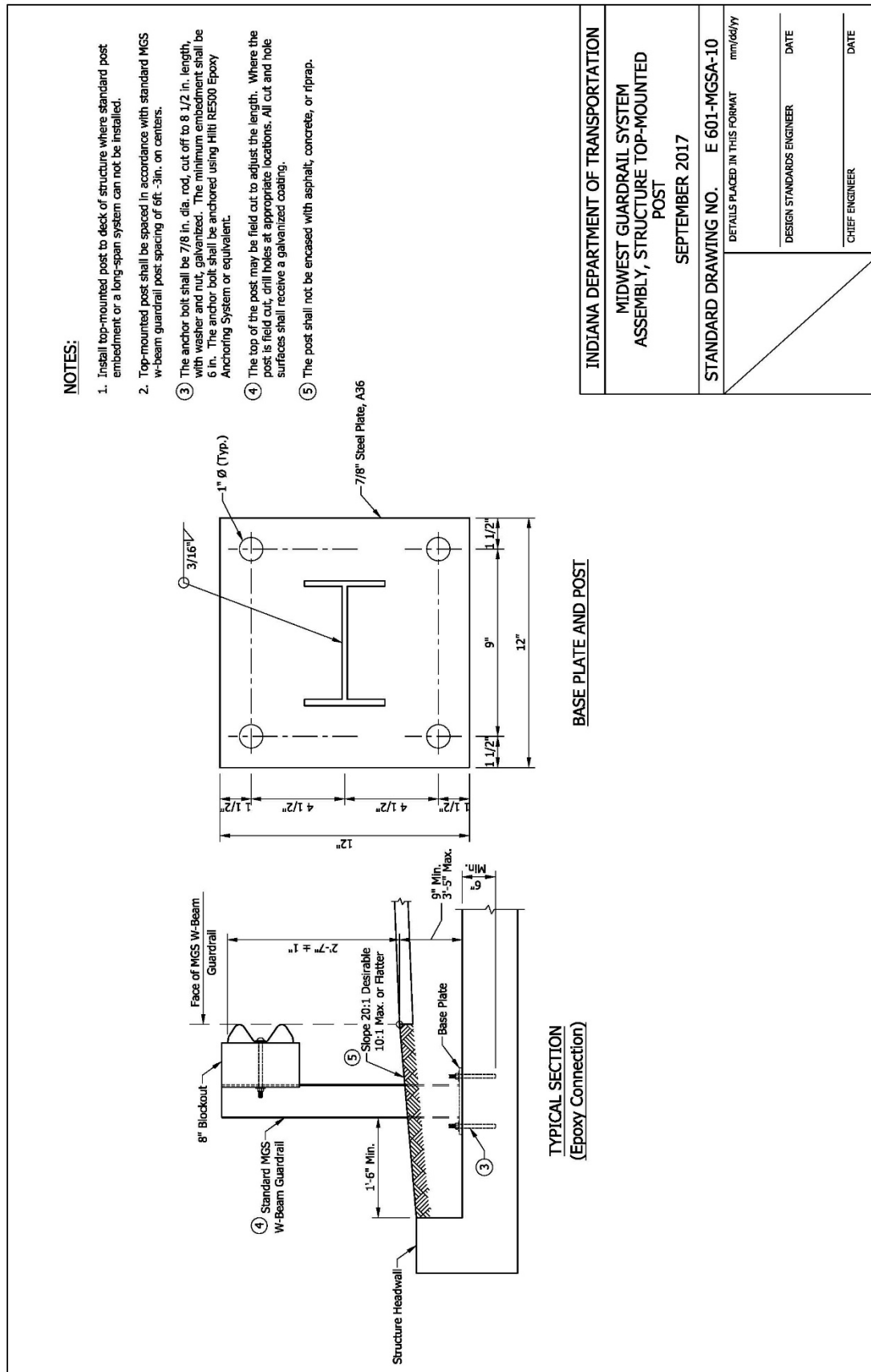
REVISION TO STANDARD DRAWINGS
601-MGSA-08 MIDWEST GUARDRAIL SYSTEM ASSEMBLY, LONG-SPAN (DRAFT)

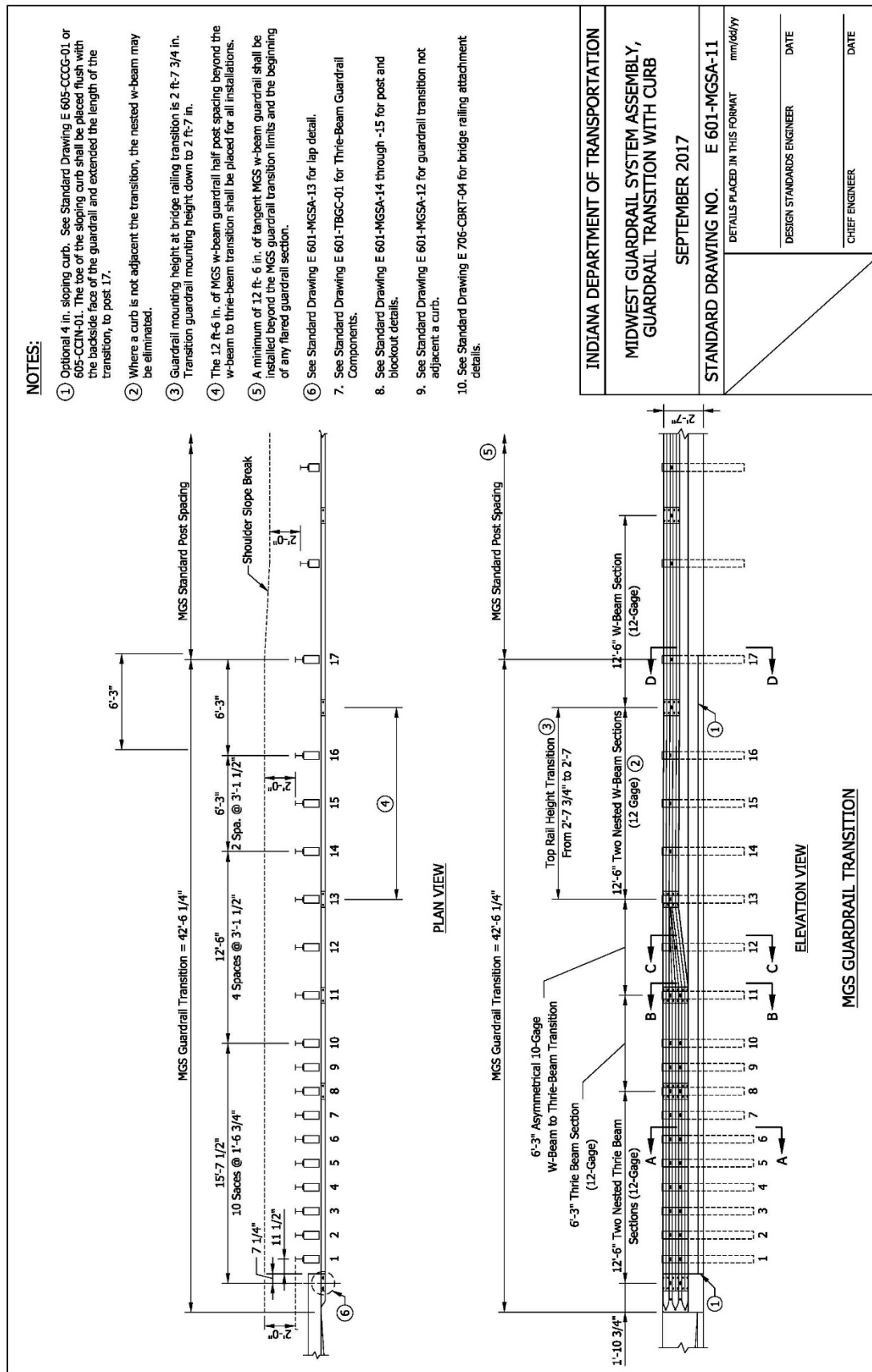


REVISION TO STANDARD DRAWINGS

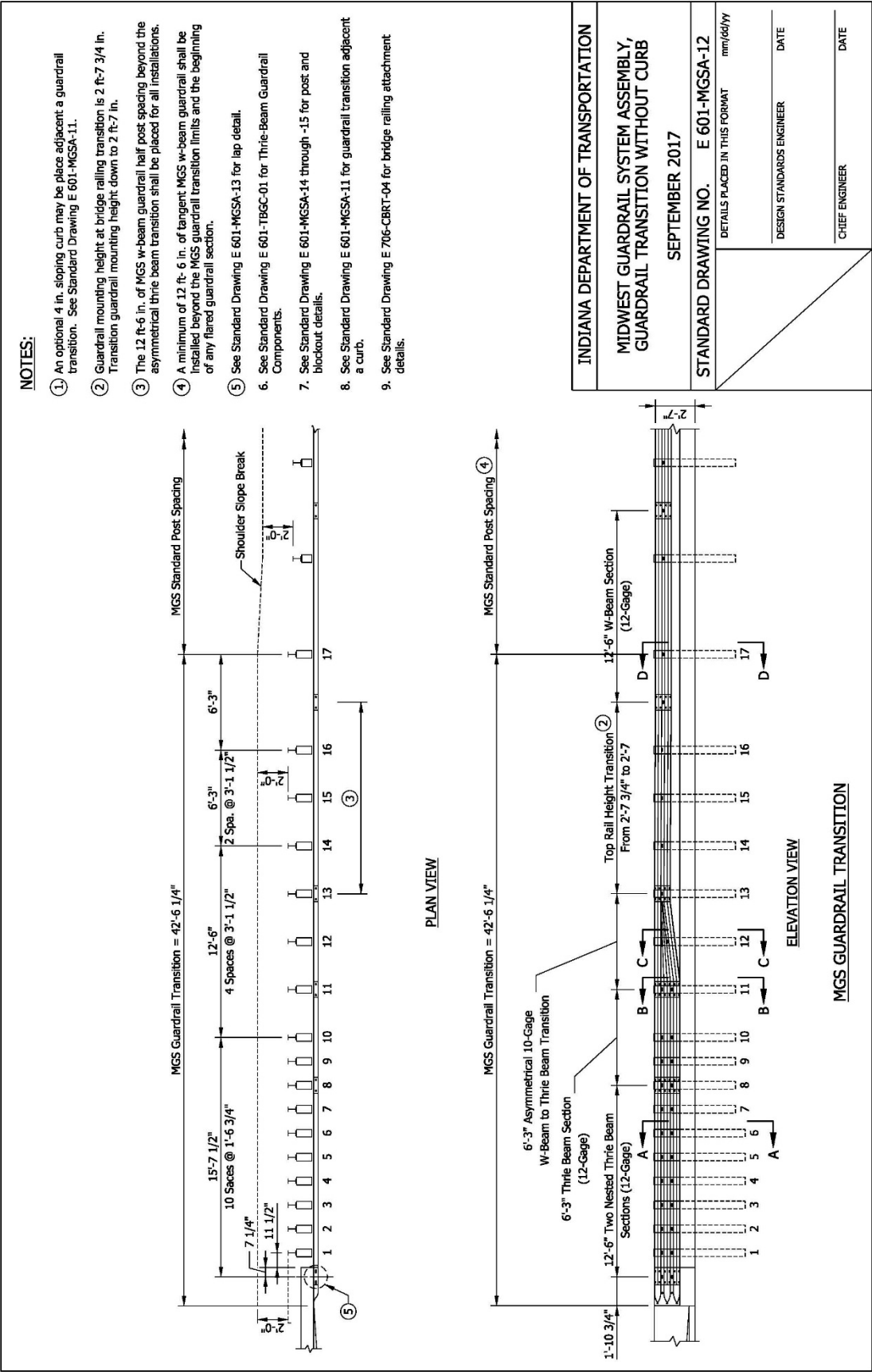
601-MGSA-09 MIDWEST GUARDRAIL SYSTEM ASSEMBLY, LONG-SPAN (DRAFT)





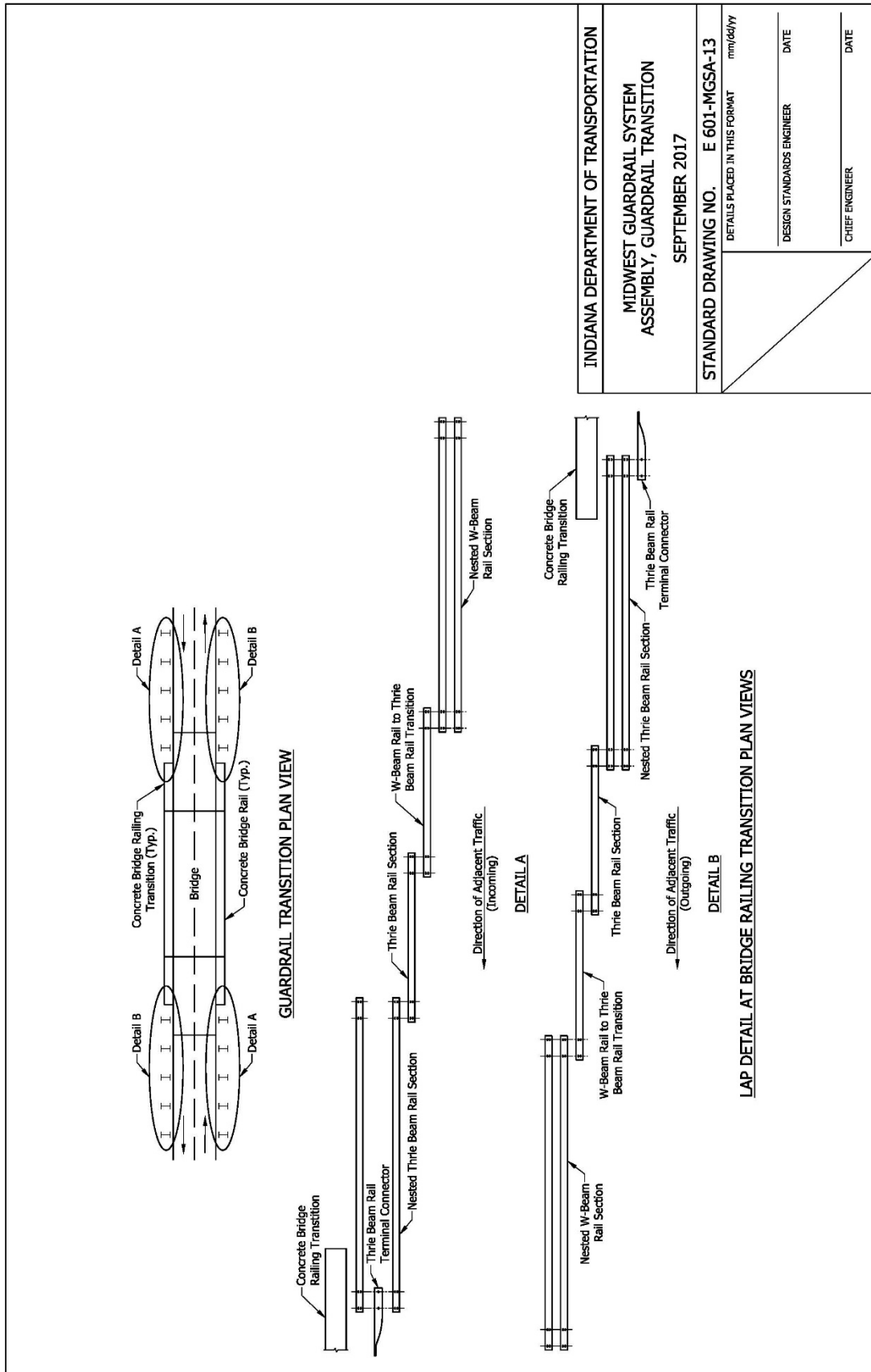


REVISION TO STANDARD DRAWINGS
601-MGSA-12 MIDWEST GUARDRAIL SYSTEM ASSEMBLY, GUARDRAIL TRANSITION WITHOUT CURB (DRAFT)



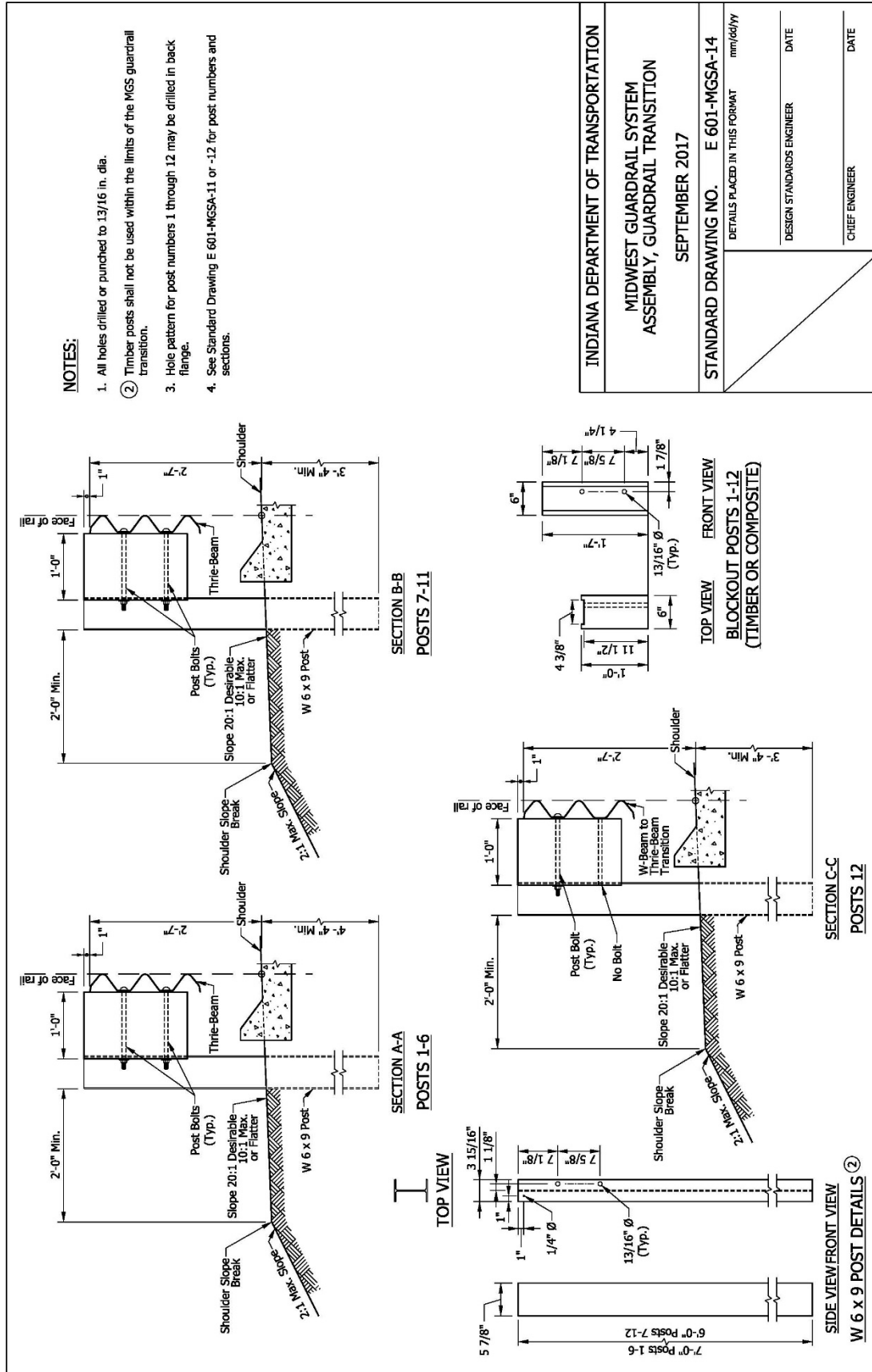
REVISION TO STANDARD DRAWINGS

601-MGSA-13 MIDWEST GUARDRAIL SYSTEM ASSEMBLY, GUARDRAIL TRANSITION (DRAFT)



REVISION TO STANDARD DRAWINGS

601-MGSA-14 MIDWEST GUARDRAIL SYSTEM ASSEMBLY, GUARDRAIL TRANSITION (DRAFT)





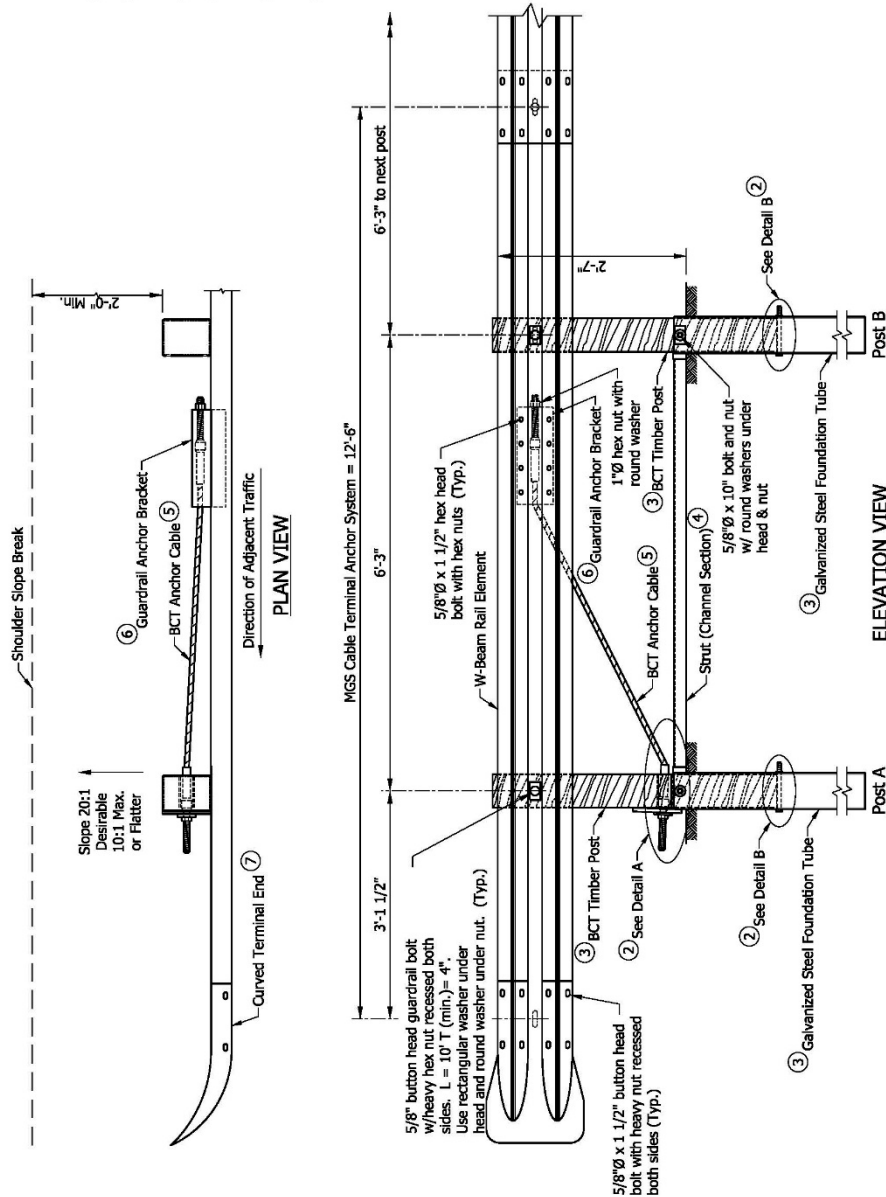


REVISION TO STANDARD DRAWINGS

601-MGSA-17 MIDWEST GUARDRAIL SYSTEM ASSEMBLY, CABLE TERMINAL ANCHOR SYSTEM (DRAFT)

NOTES:

1. The MGS cable terminal anchor system shall only be used at the outgoing end of an MGS w-beam guardrail run not exposed to oncoming traffic.
2. See Standard Drawing E 601-MGSA-18 for Details A and B.
3. See Standard Drawing E 601-MGSA-19 for BCT timber post and steel foundation tube details.
4. See Standard Drawing E 601-MGSA-20 for strut details.
5. See Standard Drawing E 601-MGSA-21 for BCT anchor cable assembly details.
6. See Standard Drawing E 601-MGSA-22 for guardrail anchor bracket details.
7. See Standard Drawing E 601-WBGC-01 for curved terminal end details.

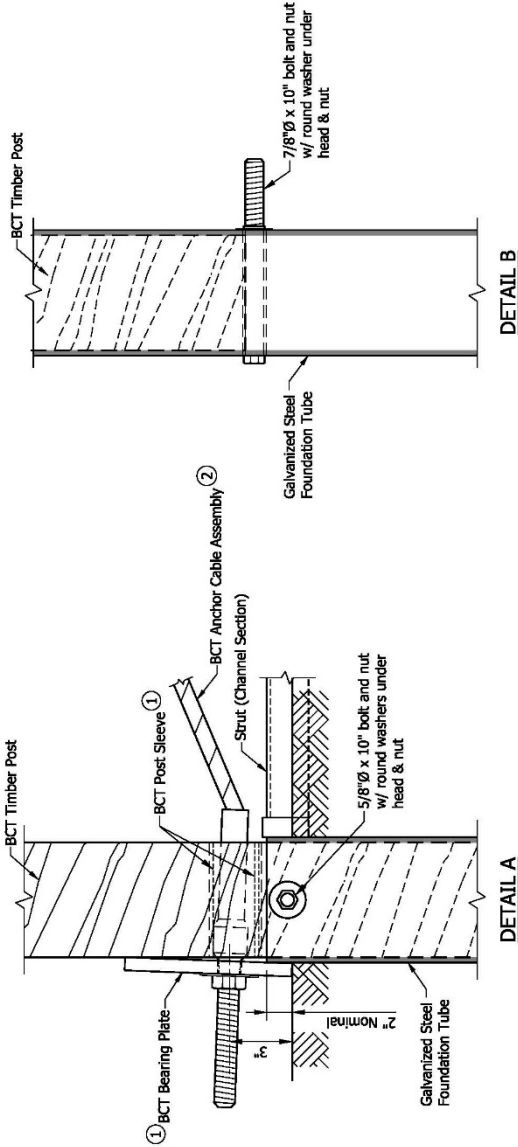


INDIANA DEPARTMENT OF TRANSPORTATION	
MIDWEST GUARDRAIL SYSTEM ASSEMBLY, CABLE TERMINAL ANCHOR SYSTEM	
SEPTEMBER 2017	
STANDARD DRAWING NO. E 601-MGSA-17	mm/dd/yy
DETAILS PLACED IN THIS FORMAT	DATE
DESIGN STANDARDS ENGINEER	DATE
CHIEF ENGINEER	DATE

REVISION TO STANDARD DRAWINGS
601-MGSA-18 MIDWEST GUARDRAIL SYSTEM ASSEMBLY, CABLE TERMINAL ANCHOR SYSTEM (DRAFT)

NOTES:

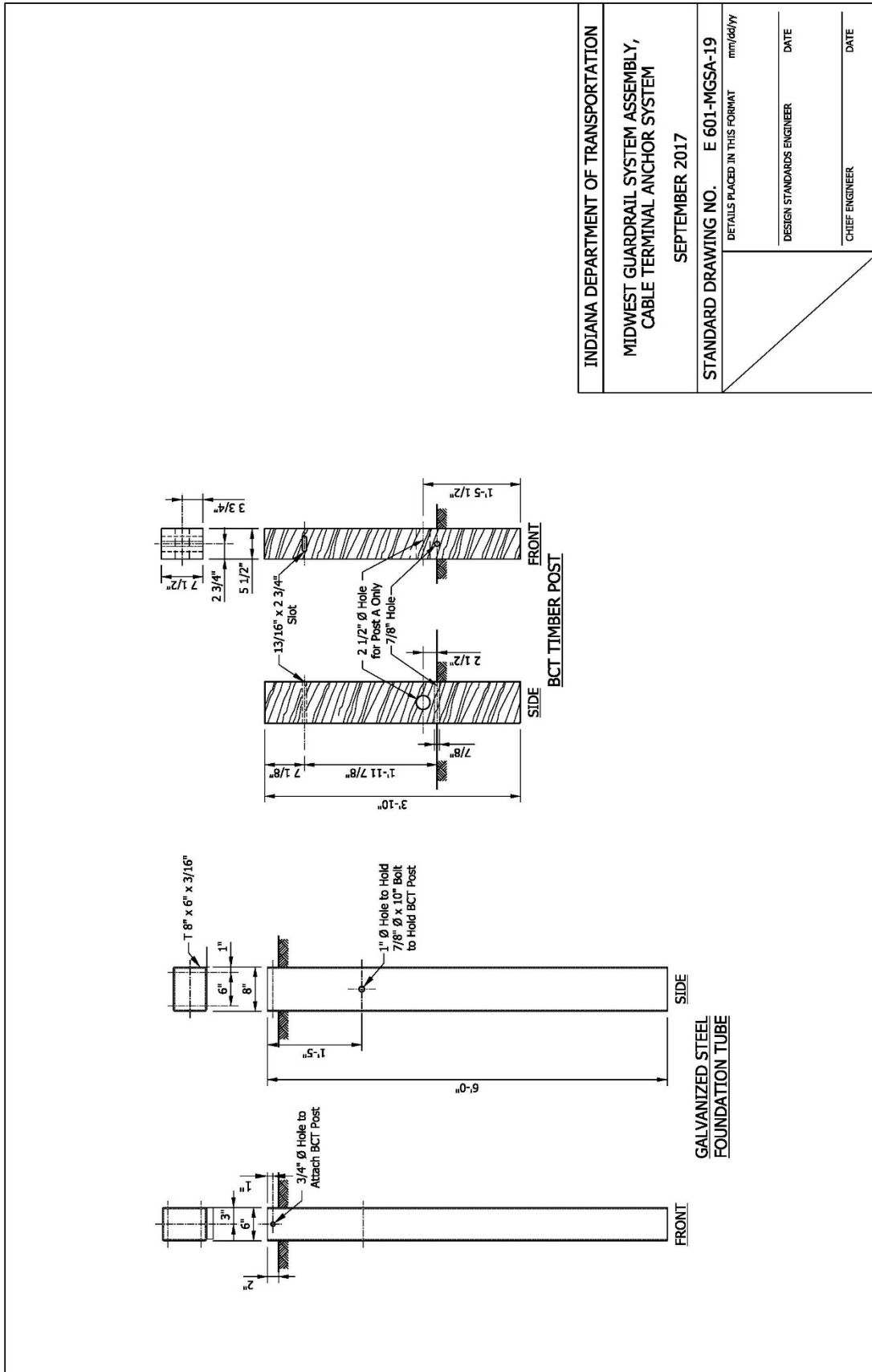
- ① See Standard Drawing E 601-MGSA-21 for BCT post sleeve and BCT bearing plate details.
- ② See Standard Drawing E 601-MGSA-21 for BCT anchor cable assembly details.



INDIANA DEPARTMENT OF TRANSPORTATION	
MIDWEST GUARDRAIL SYSTEM ASSEMBLY, CABLE TERMINAL ANCHOR SYSTEM	
SEPTEMBER 2017	
STANDARD DRAWING NO. E 601-MGSA-18	DETAILS PLACED IN THIS FORMAT mm/dd/yy
DESIGN STANDARDS ENGINEER	DATE
CHIEF ENGINEER	DATE

REVISION TO STANDARD DRAWINGS

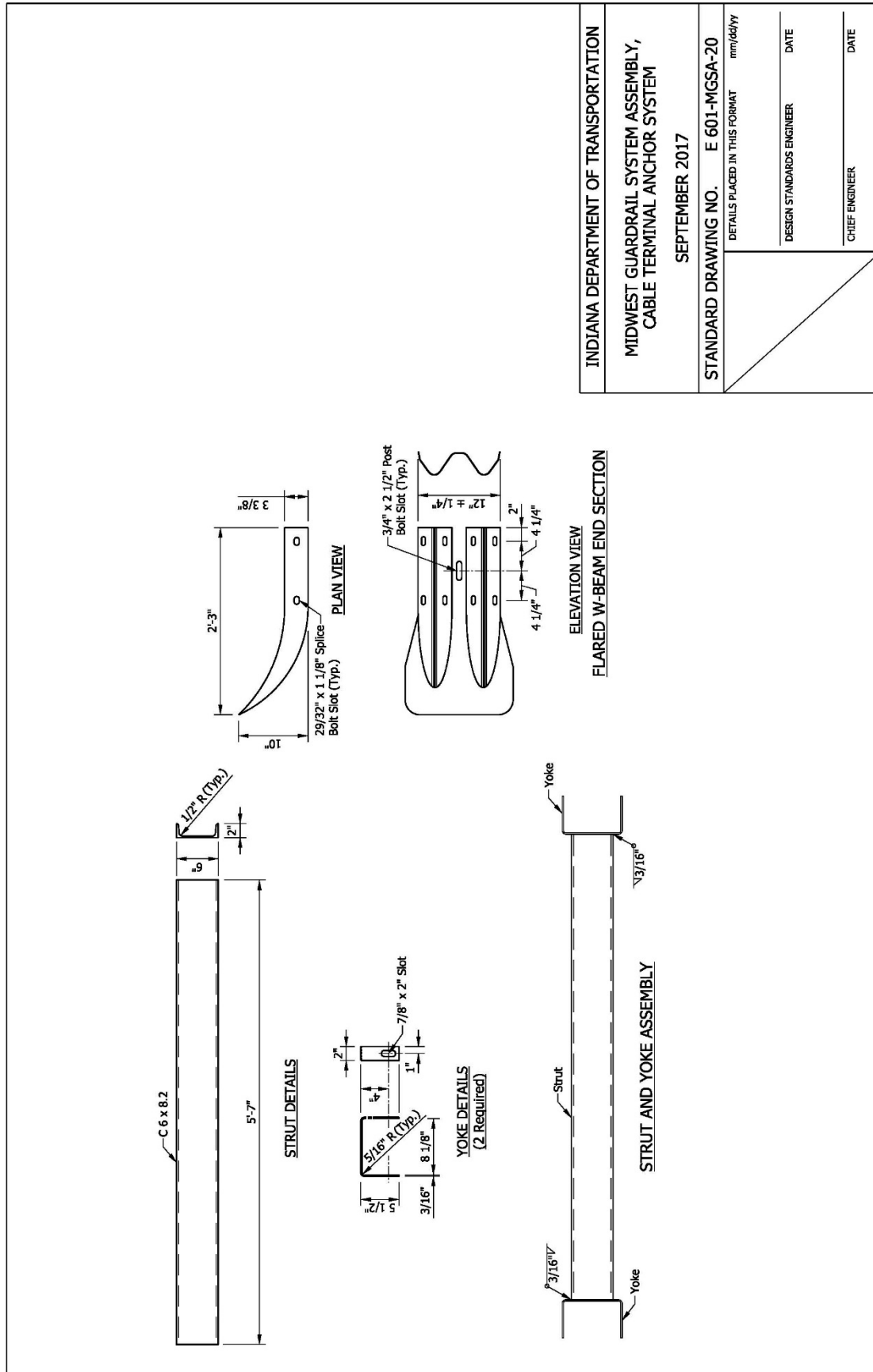
601-MGSA-19 MIDWEST GUARDRAIL SYSTEM ASSEMBLY, CABLE TERMINAL ANCHOR SYSTEM (DRAFT)



INDIANA DEPARTMENT OF TRANSPORTATION	
MIDWEST GUARDRAIL SYSTEM ASSEMBLY, CABLE TERMINAL ANCHOR SYSTEM	
SEPTEMBER 2017	
STANDARD DRAWING NO. E 601-MGSA-19	DETAILS PLACED IN THIS FORMAT mm/dd/yy
DESIGN STANDARDS ENGINEER	DATE
CHIEF ENGINEER	DATE

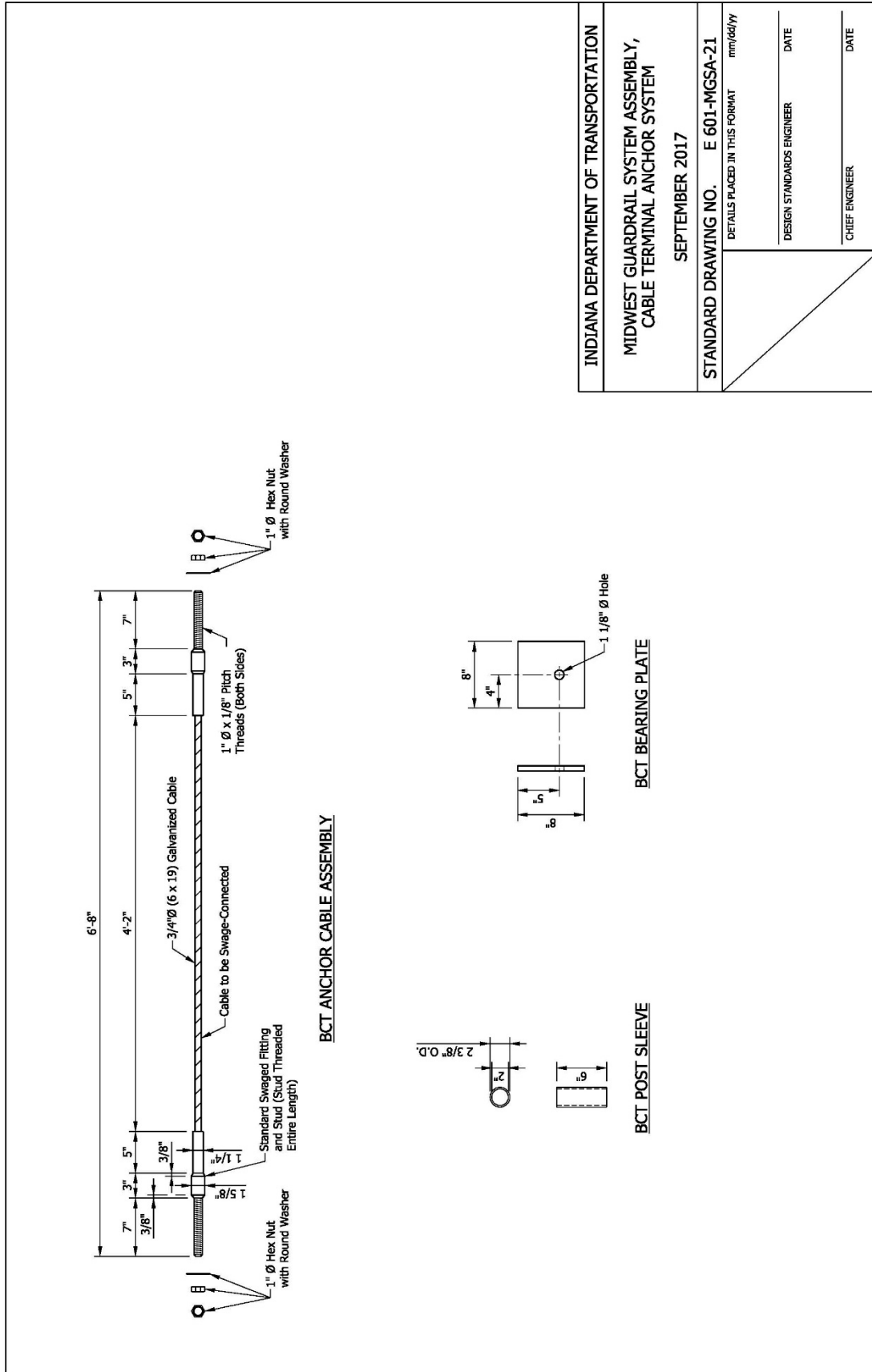
REVISION TO STANDARD DRAWINGS

601-MGSA-20 MIDWEST GUARDRAIL SYSTEM ASSEMBLY, CABLE TERMINAL ANCHOR SYSTEM (DRAFT)

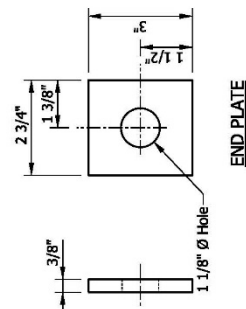


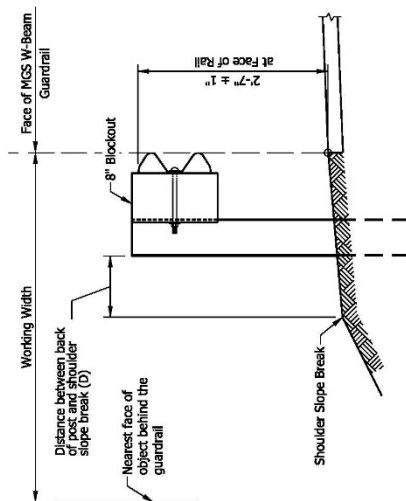
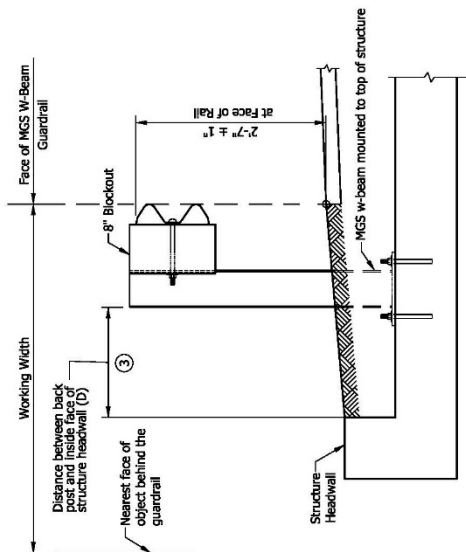
REVISION TO STANDARD DRAWINGS

601-MGSA-21 MIDWEST GUARDRAIL SYSTEM ASSEMBLY, CABLE TERMINAL ANCHOR SYSTEM (DRAFT)



INDIANA DEPARTMENT OF TRANSPORTATION	
MIDWEST GUARDRAIL SYSTEM ASSEMBLY, CABLE TERMINAL ANCHOR SYSTEM	
SEPTEMBER 2017	
STANDARD DRAWING NO. E 601-MGSA-21	DETAILS PLACED IN THIS FORMAT mm/dd/yy
DESIGN STANDARDS ENGINEER	DATE
CHIEF ENGINEER	DATE

32



Guardrail Type	Post Spacing	D	Working Width
MGS W-Beam Standard	6'-3"	2 ft	5.0 ft
MGS W-Beam Standard w/Omitted Post	6'-3"	2 ft	5.0 ft
MGS W-Beam Standard	6'-3"	< 2 ft	6.5 ft
MGS W-Beam Half Post Spacing	3'-1 1/2"	2 ft	4.5 ft
MGS W-Beam Quarter Post Spacing	1'-6 3/4"	2 ft	4.0 ft
MGS Structure Top-Mount Post	6'-3"	1.5 ft ③	4.2 ft

NOTES:

1. Guardrail placement shall consider working width.
2. Working width assumes an 8-in. blockout. Where a deeper blockout is used, the working width shall be adjusted to include the additional depth.
3. Distance between the back of post and inside face of structure headwall.

INDIANA DEPARTMENT OF TRANSPORTATION

**MIDWEST GUARDRAIL SYSTEM
ASSEMBLY, WORKING WIDTH**

SEPTEMBER 2017

STANDARD DRAWING NO. E 601-MGSA-23

DETAILS PLACED IN THIS FORMAT		mm/dd/yy
-------------------------------	--	----------

DESIGN STANDARDS ENGINEER	DATE
---------------------------	------

CHIEF ENGINEER _____ DATE _____

COMMENTS AND ACTION

601-TBGC-01 and -02
601-MGSA 01 thru 23

DISCUSSION:

<p>Motion: Second: Ayes: Nays: FHWA Approval:</p>	<p>Action: ____ Passed as Submitted ____ Passed as Revised <u> </u> <u> </u> Withdrawn</p>
<p>Standard Specifications Sections referenced and/or affected:</p> <p>601 pg 393; 910.11 pg 936; 911.02(f) pg 962; 926.03 pg 1084.</p> <p>Recurring Special Provision affected:</p> <p style="text-align: center;">NONE</p> <p>Standard Drawing affected:</p> <p>601-TBGC-01 and -02; 601-MGSA series (proposed new)</p> <p>Design Manual Sections affected:</p> <p>49-4.0, 49-5.0, 49-8.0, 49-9.0</p> <p>GIFE Sections:</p> <p style="text-align: center;">21.1</p>	<p>____ 2020 Standard Specifications</p> <p>____ Revise Pay Items List</p> <p>____ Create RSP (No.____) Effective ____ Letting RSP Sunset Date:</p> <p>____ Revise RSP (No.____) Effective ____ Letting RSP Sunset Date:</p> <p>____ Standard Drawing Effective</p> <p>____ Create RPD (No. ____) Effective ____ Letting</p> <p>____ GIFE Update</p> <p>____ SiteManager Update</p>

Mr. Boruff
Date: 05/18/17

STANDARD SPECIFICATIONS, SPECIAL PROVISIONS AND STANDARD DRAWINGS
REVISION TO SPECIAL PROVISIONS

PROPOSAL TO STANDARDS COMMITTEE

PROBLEM(S) ENCOUNTERED: RSP 805-T-078 for electrical insulation sealant has not been updated in many years and the product information is no longer current.

PROPOSED SOLUTION: Update RSP 805-T-078 with products that INDOT is using for signal cable and wire splices.

APPLICABLE STANDARD SPECIFICATIONS: 805.05

APPLICABLE STANDARD DRAWINGS: No

APPLICABLE DESIGN MANUAL SECTION: No

APPLICABLE SECTION OF GIFE: No

APPLICABLE RECURRING SPECIAL PROVISIONS: 805-T-078

PAY ITEMS AFFECTED: No

APPLICABLE SUB-COMMITTEE ENDORSEMENT: Ad hoc review by district signal tech supervisors and traffic operations managers

IMPACT ANALYSIS (attach report): Yes, attached.

Submitted By: Joe Bruno on behalf of Dave Boruff

Title: Traffic Administration Engineer

Organization: INDOT

Phone Number: (317) 234-7949

Date: 4/24/2017

STANDARD SPECIFICATIONS, SPECIAL PROVISIONS AND STANDARD DRAWINGS
REVISION TO SPECIAL PROVISIONS

IMPACT ANALYSIS REPORT CHECKLIST

Explain the business case as to why this item should be presented to the Standards Committee for approval. Answer the following questions with Yes, No or N/A.

Does this item appear in any other specification sections? No

Will approval of this item affect the Approved Materials List? No

Will this proposal improve:

Construction costs? No

Construction time? No

Customer satisfaction? No

Congestion/travel time? No

Ride quality? No

Will this proposal reduce operational costs or maintenance effort? Yes

Will this item improve safety:

For motorists? No

For construction workers? No

Will this proposal improve quality for:

Construction procedures/processes? Yes

Asset preservation? Yes

Design process? No

Will this change provide the contractor more flexibility? No

Will this proposal provide clarification for the Contractor and field personnel?
Yes

Can this item improve/reduce the number of potential change orders? No

Is this proposal needed for compliance with:

Federal or State regulations? No

AASHTO or other design code? No

Is this item editorial? No

Provide any further information as to why this proposal should be placed on the Standards Committee meeting Agenda: N/A

REVISION TO SPECIAL PROVISIONS

805-T-078 ELECTRICAL INSULATION SEALANT

(Note: Proposed changes shown highlighted gray.
Basis for Use: Required for contracts with traffic signal or lighting installations.)

805-T-078 ELECTRICAL INSULATION SEALANT

(Adopted 09-01-05)

The electrical insulation sealant for ~~this contract~~ cable or wire splices as described in Section 805.05 shall be chosen from the following list:

- (a) ~~Aquaseal~~ Star brite liquid electrical tape, manufactured by Star brite, Inc.
 - ~~(b) Electrical 430~~
 - (eb) 3M ~~Electrical Insulation Putty~~ Scotchkote Electrical Coating, manufactured by 3M Company
 - (ec) 10 Plyseal Insulating Mastic, manufactured by Plymouth Rubber Europa S.A.
 - (ed) or approved equal.
-

COMMENTS AND ACTION

805-T-078 ELECTRICAL INSULATION SEALANT

DISCUSSION:

Motion: Second: Ayes: Nays: FHWA Approval:	Action: <input type="checkbox"/> Passed as Submitted <input type="checkbox"/> Passed as Revised <input type="checkbox"/> Withdrawn
Standard Specifications Sections referenced and/or affected: NONE	<input type="checkbox"/> 2020 Standard Specifications <input type="checkbox"/> Revise Pay Items List
Recurring Special Provision affected: 805-T-078 ELECTRICAL INSULATION SEALANT	<input type="checkbox"/> Create RSP (No._____) Effective _____ Letting RSP Sunset Date:
Standard Drawing affected: NONE	<input type="checkbox"/> Revise RSP (No._____) Effective _____ Letting RSP Sunset Date:
Design Manual Sections affected: NONE	<input type="checkbox"/> Standard Drawing Effective
GIFE Sections cross-references: NONE	<input type="checkbox"/> Create RPD (No. _____) Effective _____ Letting <input type="checkbox"/> GIFE Update <input type="checkbox"/> SiteManager Update

STANDARD SPECIFICATIONS, SPECIAL PROVISIONS AND STANDARD DRAWINGS
REVISION TO STANDARD SPECIFICATIONS

PROPOSAL TO STANDARDS COMMITTEE

PROBLEM(S) ENCOUNTERED:

The Department is going to start requiring the submittal of payrolls to the PE/S in electronic format in order to take care of issue with State Board of Accounts.

PROPOSED SOLUTION:

Therefore the Department needs to change the Specifications to require the submission in electronic format and also let Contractors know that the Department may hold estimates until they are submitted.

APPLICABLE STANDARD SPECIFICATIONS: 103.06

APPLICABLE STANDARD DRAWINGS: N/A

APPLICABLE DESIGN MANUAL SECTION: N/A

APPLICABLE SECTION OF GIFE: TBD

APPLICABLE RECURRING SPECIAL PROVISIONS: N/A

PAY ITEMS AFFECTED: None

IMPACT ANALYSIS (attach report):

Submitted By: Greg Pankow

Title: State Construction Engineer

STANDARD SPECIFICATIONS, SPECIAL PROVISIONS AND STANDARD DRAWINGS
REVISION TO STANDARD SPECIFICATIONS

IMPACT ANALYSIS REPORT CHECKLIST

Explain the business case as to why this item should be presented to the Standards Committee for approval. Answer the following questions with Yes, No or N/A.

Does this item appear in any other specification sections? No

Will approval of this item affect the Approved Materials List? No

Will this proposal improve:

Construction costs? No

Construction time? Yes

Customer satisfaction? Yes

Congestion/travel time? No

Ride quality? No

Will this proposal reduce operational costs or maintenance effort? No/Yes;

Will this item improve safety:

For motorists? No

For construction workers? Yes

Will this proposal improve quality for:

Construction procedures/processes? Yes

Asset preservation? No

Design process? No

Will this change provide the contractor more flexibility? No

Will this proposal provide clarification for the Contractor and field personnel?
Yes

Can this item improve/reduce the number of potential change orders? No

Is this proposal needed for compliance with:

Federal or State regulations? Yes

AASHTO or other design code? No

Is this item editorial? No

Provide any further information as to why this proposal should be placed on the Standards Committee meeting Agenda:

REVISION TO STANDARD SPECIFICATIONS

SECTION 103 - AWARD AND EXECUTION OF CONTRACT

103.06 WAGE AND LABOR REQUIREMENTS

(Note: Proposed changes shown highlighted gray)

The Standard Specifications are revised as follows:

SECTION 103, BEGIN LINE 631, DELETE AND INSERT AS FOLLOWS:

103.06 Wage and Labor Requirements

These requirements ~~will apply only to a 100% State funded contract~~ *to all contracts let by the Department.* These requirements will apply to all work performed by the Contractor with its own organization and with the assistance of workers under its immediate superintendence, and to all work performed by piecework, station work, ~~or subcontract,~~ *or lease.*

(a) Non-discrimination of Employees

The Contractor and its subcontractors shall not discriminate against an employee or applicant for employment, to be employed in the performance of the contract work, with respect to hire, tenure, terms, conditions, or privileges of employment or matters directly or indirectly related to employment, because of race, religion, color, sex, *sexual orientation, sexual identity,* disability, national origin, or ancestry. Breach of this covenant may be regarded as a material breach of the contract.

(b) Affidavits and Payrolls

All labor shall be paid weekly. The payroll and related records of the Contractor and all subcontractors shall be preserved for a period of three years after completion of the project work, and be open to the inspection of the Department.

The wages of labor shall be paid in legal tender of the United States. However, this condition will be considered satisfied if payment is made by means of a negotiable check, on a solvent bank, which may be cashed readily by the employees in the local community for the full amount, without discount or collection charges. If checks are used for payment, the Contractor shall make all necessary arrangements for them to be cashed and shall give information regarding such arrangements.

The Contractor on each contract let by the Department shall be responsible for electronically filing certified payroll for its employees and any subcontractors on a weekly basis with the appropriate Department personnel and in a format acceptable to the Department. Failure of the Contractor to timely file certified payroll for its employees or any subcontractors, may result in the withholding of progress estimate payments until the certified payroll is properly submitted.

No fee shall be asked or accepted by the Contractor or its agents from a person as a condition of the contract.

No laborers shall be charged for tools used in performing their respective duties except for reasonable avoidable loss or damage thereto.

REVISION TO STANDARD SPECIFICATIONS

SECTION 103 - AWARD AND EXECUTION OF CONTRACT

103.06 WAGE AND LABOR REQUIREMENTS

Each employee on the work covered by the contract shall be allowed to lodge, board, or trade where or with whom he or she elects. Neither the Contractor nor its agents, nor its employees shall directly or indirectly require as a condition of employment that an employee shall lodge, board, or trade at a particular place or with a particular person.

No charge shall be made for transportation furnished by the Contractor or its agents to a person employed on the work.

No individual shall be employed as a laborer on the contract except on a wage basis. This shall not be construed to prohibit the rental of trucks or other equipment from individuals. No such rental agreement, or charges for fuel, supplies, or repairs on account of such agreement shall cause deduction from the wages accruing to an employee except as authorized by the regulation cited herein.

(c) Wage Stipulations

No person employed on a federally funded contract shall be paid less than required by the rate of wages set forth for labor classifications listed in the General Decision as required by the Davis Bacon Act and related Acts. No person employed on ~~the~~ *a state funded* contract shall be paid at a rate of less than \$11.25/h, as required by IC 8-23-9-22 *or the rate of wages set forth for labor classifications listed in the General Decision, whichever is greater.*

1. General Decision Included in Contract Information Book

The Contractor shall pay the workers who are employed in performance of the contract work, rates of wages which are not less than the rates set forth for labor classifications listed in the General Decision.

The computations used in arriving at the contract unit prices shall be based on the hourly rates shown in the General Decision and as shown above. The wages herein stipulated shall become and be a part of the contract as provided by law.

The following statement, shown in the General Decision, will not apply *to state funded contracts.*

“Unlisted classifications needed for work not included within the scope of the classifications listed may be added after award only as provided in the labor standards contract clauses (29 CFR 5.5(a)(1)(ii)).”

2. General Decision Not Included in Contract Information Book

If the General Decision is not included in the Contract Information book, the requirements of 103.06(c)1 will not apply.

COMMENTS AND ACTION

103.06 WAGE AND LABOR REQUIREMENTS

DISCUSSION:

Motion: Second: Ayes: Nays: FHWA Approval:	Action: <input type="checkbox"/> Passed as Submitted <input type="checkbox"/> Passed as Revised <input type="checkbox"/> Withdrawn
Standard Specifications Sections referenced and/or affected: 103.06 pg 26. Recurring Special Provision affected: NONE Standard Drawing affected: NONE Design Manual Sections affected: NONE GIFE Sections cross-references: NONE	<input type="checkbox"/> 2020 Standard Specifications <input type="checkbox"/> Revise Pay Items List <input type="checkbox"/> Create RSP (No._____) Effective _____ Letting RSP Sunset Date: <input type="checkbox"/> Revise RSP (No._____) Effective _____ Letting RSP Sunset Date: <input type="checkbox"/> Standard Drawing Effective <input type="checkbox"/> Create RPD (No._____) Effective _____ Letting <input type="checkbox"/> GIFE Update <input type="checkbox"/> SiteManager Update